

**THE COUNCIL OF THE BOROUGH OF MILTON KEYNES
(CENTRAL MILTON KEYNES) (ON-STREET PREMIUM RATE AND LONG
STAY PAY AND DISPLAY PARKING PLACES) ORDER 2002**

The Council of the Borough of Milton Keynes ("the Council") in exercise of its powers under Sections 45, 46, 49 and 53 and Part IV of Schedule 9 of the Road Traffic Regulation Act 1984 ("the Act of 1984") and of all other enabling powers, and after consultation with the chief officer of police in accordance with Part III of Schedule 9 to the Act of 1984, hereby makes the following Order:

PART 1

IMPLEMENTATION, CITATION, DEFINITIONS AND REVOCATIONS

1. This Order shall come into operation on the 27th of October 2002 and may be cited as "The Council of the Borough of Milton Keynes (Central Milton Keynes) (On-Street Premium Rate and Long Stay Pay and Display Parking Places) Order 2002".
2. In this Order, except where the context otherwise requires, the following expressions have the meanings respectively assigned to them:-

"access way" means a length of road sufficient to enable a vehicle to have access to and egress from land or premises in or adjacent to the road;

"disabled persons' badge" has the same meaning as in the Local Authorities' Traffic Orders (Exemptions for Disabled Persons) (England) Regulations 2000;

"driver" in relation to a vehicle waiting in a parking place, means the person driving the vehicle at the time it was left in the parking place;

"dual purpose vehicle" has the same meaning as in the Road Vehicles (Construction and Use) Regulations 1986;

"goods" includes postal packets of any description, cash or other valuable securities;

"delivering" and "collecting" in relation to any goods includes checking the goods for the purpose of their delivery or collection;

"goods vehicle" means a motor vehicle which is constructed or adapted for the carriage of goods of any description and which does not exceed 3.5 tonnes gross laden weight;

"moped" means a two or three wheel vehicle fitted with an engine having a cylinder capacity not exceeding 50 cubic centimetres if of the internal combustion type and a maximum design speed of not more than 45 kilometres per hour;

"motor cycle" means a two-wheel vehicle with or without a sidecar, fitted with an engine having a cylinder capacity of more than 50 cubic

centimetres if of the internal combustion type and/or having a maximum design speed of more than 45 kilometres per hour;

"parking attendant" has the same meaning as in Section 63A of the Road Traffic Regulation Act 1984;

"passenger vehicle" means a motor vehicle (other than a motor cycle or invalid carriage) constructed solely for the carriage of passengers and their effects and adapted to carry not more than twelve passengers exclusive of the driver, and not drawing a trailer;

"payment day" means the date by which payment should be made, as specified in the most recent notice received by the driver or owner of the vehicle;

"penalty charge" has the same meaning as in Section 66(2) of the Road Traffic Act 1991;

"penalty charge notice" means a notice dispensed by a parking attendant informing the driver of the vehicle that they are in contravention of a restriction and that a penalty charge is now owed;

"postal packets" has the same meaning as in Section 125 of the Postal Services Act 2000;

"prepaid card" means a parking device in which is stored electronically an amount of credit and which, when inserted into a ticket parking meter adapted for that purpose, is debited with the amount of the charge;

"prescribed hours" means between those hours stated in Schedules 1, 2 and 3 to this Order;

"road" means a highway and any other road to which the public has access;

"statutory undertaker" has the same meaning as in Section 329 of the Highways Act 1980;

"street trading vendor's vehicle" means a vehicle constructed or adapted so as to enable hot or cold food to be prepared in and sold from the vehicle;

"taxi" has the same meaning as in Regulation 4 of the Traffic Signs and General Directions Act 1991;

"telecommunications apparatus" has the same meaning as in the Telecommunications Act 1984;

"traffic sign" means a sign of any size, colour and type prescribed or authorised under, or having effect as though prescribed or authorised under, Section 64 of the Act of 1984;

"user" in relation to a vehicle, means the person by whom such vehicle is owned, kept or used.

3. Any reference in this Order to any enactment shall be construed as a reference to that enactment as amended by any subsequent enactment.
4. The plan annexed to this Order identifies the lengths of road subject to this Order, provided that where there is any inconsistency between

the plans and the Schedules it is the wording of the Schedules which shall prevail.

5. Without prejudice to the validity of anything done or to any liability incurred in respect of any act or omission before the coming into effect of this Order any provisions of any Orders mentioned in Schedule 5 hereto are hereby revoked to the extent stated in that Schedule.

PART 2

PAY AND DISPLAY PARKING PLACES

6.
 - (1) Each of the lengths of road specified in Schedules 1, 2 and 3 to this Order is authorised to be used during the prescribed hours, subject to provisions to this Part of this Order, as a pay and display parking place for passenger vehicles, dual purpose vehicles and goods vehicles.
 - (2) Nothing in paragraph (1) of this Article shall apply so as to permit a trailer, whether or not attached to a vehicle, to park at any time in any pay and display parking place.
 - (3) No person shall park any street trading vendors vehicle in a pay and display parking place or use any such vehicle while it is in such a parking place, in connection with the sale of any article to any person in or near the parking place or in connection with the selling or offering for hire of his skill or services, provided that nothing in this Article: -
 - a) shall prevent the sale of goods from a vehicle if the vehicle is of a class specified in paragraph (1) of this Article and if the goods are immediately delivered at or taken into premises adjacent to the vehicle from which the sale is effected; or
 - b) shall apply if the person has obtained the written consent of the Council before doing so.
7. A vehicle which is present in a pay and display parking space specified in Schedules 1, 2 and 3 hereto at the commencement of the hours of operation of any restrictions imposed by this Order shall be deemed to have been left in that pay and display parking place at the commencement of that period of operation of that pay and display parking space.

8.
 - (1) The limits of each pay and display parking place and of every pay and display parking space within a pay and display parking place and of any access way in a pay and display parking place shall be indicated on the road by the appropriate traffic signs;
 - (2) Any vehicle standing in a pay and display parking space shall stand wholly within the limits so marked or, if the length of the vehicle precludes the vehicle being positioned in that manner, so that the longitudinal axis of the vehicle is parallel to the edge of the carriageway nearest to the vehicle;
 - (3) The Council shall install and maintain in proper working order at least one ticket parking meter in such position as it thinks fit in the vicinity of a pay and display parking space.
9. The driver of a vehicle using a pay and display parking place shall stop the engine as soon as the vehicle is in position in the parking space, and shall not start the engine of the vehicle except when about to change the position of the vehicle in or to depart from the parking space.
10.
 - (1) Each area on a highway which is described in Schedules 1, 2, and 3 to this Order is designated as a parking place for mopeds and motorcycles.
 - (2) No charge for parking in any pay and display parking space specified in Schedules 1, 2 and 3 to this Order, the use of which has not been suspended, shall be payable by any moped or motorcycle.
11. No charge for parking in any pay and display parking space, the use of which has not been suspended, shall be payable by any disabled persons' vehicle which displays in the relevant position a disabled persons' badge.
12. For the purposes of this Order a vehicle shall be regarded as displaying a disabled person's badge in the relevant position under the Disabled Persons (Badges for Motor Vehicles) (England) Regulations 2000 if:

- (1) the badge is exhibited on the dashboard or facia of the vehicle so that the front of the badge is clearly legible from the outside of the vehicle; or
 - (2) where the vehicle is not fitted with a dashboard or facia, the badge is exhibited in a conspicuous position on the vehicle so that the front of the badge is clearly legible from the outside of the vehicle.
13.
 - (1) The charge for a vehicle parked in a pay and display parking space shall be as specified in items 1, 2 and 3 of Schedule 4 to this Order.
 - (2) Subject to the provisions of Article 17 of this Order, the charge shall be payable on the leaving of the vehicle in a pay and display parking space: -
 - (a) by any combination of coins of appropriate denominations to the amount of the charge;
 - (b) if the ticket parking meter is so constructed or adapted, by a prepaid card of which the remaining credit is not less than the amount of the charge.
 - (3) Upon payment of the charge for a vehicle left in a pay and display parking place the driver of the vehicle shall display or cause to be displayed on the vehicle, in accordance with the provisions of paragraph (5) of this Article, the ticket issued by the ticket parking meter on payment of the charge in accordance with paragraph (2) of this Article.
 - (4) Payment of the charge for a vehicle left in the pay and display parking place shall be indicated by the issue by a ticket parking meter relating to that parking place of a ticket indicating that a charge has been paid for that occasion, and by the display of that ticket in the manner specified in paragraph (5) of this Article.
 - (5) The ticket referred to in paragraph (3) of this Article shall be displayed on the vehicle in respect of which it was issued at all times during which the vehicle is left during the prescribed hours in the pay and display parking place in the relevant position on the vehicle, provided that for the purposes of this Article, if a vehicle when first left in the parking place is exempt from payment of any charge by virtue of the provisions of Article 19 of this Order and continues to wait in that parking place otherwise than in accordance with those provisions, the charge shall be treated as having been incurred and shall be payable at the time when the vehicle ceased to wait by

virtue of those provisions and all the provisions of this Part of this Order shall then apply accordingly.

- (6) For the purposes of this Order a vehicle shall be regarded as displaying a ticket indicating that a charge has been paid in the relevant position if the ticket is exhibited in a conspicuous position on the dashboard of the vehicle so that the particulars on that side of that ticket which bears the indication that a charge has been paid are clearly legible from the outside of the vehicle.
 - (7) When a ticket has been displayed on a vehicle in accordance with the provisions of paragraphs (5) and (6) of this Article no person, not being the driver of the vehicle, shall remove the ticket from the vehicle unless authorised to do so by the driver of the vehicle.
14. No person shall display on a vehicle left in a pay and display parking place during the prescribed hours any ticket issued by a ticket parking meter relating to that parking place other than the ticket issued by such a ticket parking meter upon payment of the charge in respect of that vehicle and which is valid for the period during which the vehicle is parked in the parking place.
15. If a vehicle is left in a pay and display parking place during the prescribed hours for longer than the period for which payment was made by the charge, a Penalty Charge Notice may be issued in accordance with the provisions of Part 3 to this Order.
16.
 - (1) If at any time while a vehicle is left in a pay and display parking place during the prescribed hours no ticket issued by a ticket parking meter relating to that parking place is displayed on that vehicle in accordance with the provisions of paragraphs (5) and (6) of Article 13 it shall be presumed unless the contrary is proved that the charge has not been paid and the driver of the vehicle may be issued with a Penalty Charge Notice in accordance with the provisions of Part 3 to this Order.
 - (2) Any ticket issued by a ticket parking meter relating to a parking place shall be presumed, unless the contrary is proved, to have been issued on the day shown on the ticket.
17. If on the leaving of the vehicle during the prescribed hours in a pay and display parking place there is on every ticket parking meter relating to that parking place a notice placed by a person authorised by the Council or by the Chief Officer of Police indicating that the

ticket parking meter is out of order that vehicle shall be exempt from any charge.

18.
 - (1) A police officer in uniform or traffic warden may in case of emergency move or cause to be moved any vehicle left in a parking place to any place he thinks fit.
 - (2) Any person authorised to remove a vehicle or alter its position by virtue of paragraph (1) of this Article may do so by towing or driving the vehicle or in such other manner as he may think necessary and may take such measures in relation to the vehicle as he may think necessary to enable him to remove it or alter its position as the case may be.
19. Nothing in this Part of this Order shall render it a contravention of this Order to cause or permit a vehicle to park during the prescribed hours in a pay and display parking place specified in Schedules 1, 2 and 3 for so long as may be necessary:
 - (1) when the person in control of the vehicle is required by law to stop or is obliged to stop in order to avoid an accident or is prevented from proceeding by circumstances outside his control;
 - (2) to enable a person to board or alight from the vehicle;
 - (3) to enable goods to be loaded or unloaded from the vehicle;
 - (4) to enable the vehicle if it cannot reasonably be used for such purpose in any other road to be used in connection with any of the following:
 - a) building, industrial or demolition operations;
 - b) the removal of any obstruction to traffic;
 - c) the laying, erection or repair of any sewer, main, pipe or apparatus for the supply of gas, water, electricity or any telecommunication system defined by the Telecommunications Act 1984;
 - d) use in the service of any undertaker, the Environment Agency or any public authority in pursuance of statutory powers or duties;
 - e) use for police, fire brigade or ambulance purposes;

- f) use for the purpose of delivering or collecting postal packets as defined by Section 125 of the Postal Services Act 2000;
- g) the vehicle being specially constructed or adapted for the delivery or collection of money or valuable securities to be used for those purposes in relation to premises in the vicinity;
- h) the removal of furniture or household effects to or from a shop, office, depository or dwellinghouse adjacent to the pay and display parking place.

20. No person shall cause or permit a vehicle to wait in a pay and display parking place by virtue of the provisions of paragraph (4) of Article 19 above otherwise than:

- (1)
 - (a) unless the length of the vehicle precludes compliance with this paragraph, so that every part of the vehicle is within the limits of a pay and display parking space; or
 - (b) if the length of the vehicle precludes compliance with the preceding paragraph, so that the longitudinal axis of the vehicle is parallel to the edge of the carriageway nearest to the vehicle; and
- (2) so that no part of the vehicle obstructs any access way other than from or to the premises referred to in paragraph (4)(h) of Article 19.

21. (1) Any person authorised by the Council may suspend the use of a parking place or any part thereof whenever and for such duration as the Council considers such suspension reasonably necessary:

- a) for the purpose of facilitating the movement of traffic or promoting its safety;
- b) for the purpose of building, industrial or demolition operations;
- c) for the purpose of the maintenance, improvement or reconstruction of the parking place;
- d) for the purpose of the laying, erection or repair of any sewer, main, pipe or apparatus for the

supply of gas, water, electricity or any telecommunication system defined by the Telecommunications Act 1984;

- e) for the convenience of occupiers of premises adjacent to the pay and display parking place on any occasion of the removal of furniture or household effects to or from a shop, office depository or dwellinghouse;
 - f) on any occasion on which it is likely by reason of some special attraction that any road will be thronged or obstructed;
 - g) for the convenience of occupiers of premises adjacent to the pay and display parking place at times of weddings or funerals, or on other special occasions.
- (2) A police officer in uniform or traffic warden may suspend for not longer than twenty-four hours the use of a pay and display parking place or any part thereof whenever he considers such suspension reasonably necessary for the purpose of facilitating the movement of traffic or promoting its safety.
- (3) Without prejudice and in addition to all other enabling powers the Council shall have the power from time to time as it deems appropriate to close or suspend for as long as it considers necessary the use of any pay and display parking place for the purpose of enabling such parking place to be used by exhibition or public information vehicles of official or quasi official authorities or bodies whose contents are intended to be and are made available for inspection by and for the public without any charge of any kind being made to the public.

22. On the suspension of the use of a pay and display parking place or any part thereof in accordance with the provisions of Article 21 of this Order:

- (1) the person authorising or causing such suspension shall, if the use of the whole or of any part of the parking place is suspended, place or cause to be placed in or adjacent to that parking place a traffic sign indicating that the use of the parking place is suspended and that waiting and loading by vehicles is prohibited;

- (2) the person authorising or causing such suspension may, if the use of the whole of the parking place is suspended, place or cause to be placed over or on all of the ticket parking meters which relate to that parking place a hood or other cover indicating that the use of a parking place is suspended.
23. (1) Save as provided in paragraph (2) of this Article no person shall cause or permit a vehicle to be left in a pay and display parking place or part thereof during any period when there is in or adjacent to that parking place or part thereof a traffic sign placed in pursuance of paragraph (1) of Article 22 of this Order that the whole or part of that parking place has been suspended.
- (2) Subject to the overriding requirement that the person in control of the vehicle shall move it on the instruction of a police officer in uniform or a traffic warden whenever such moving shall be necessary for the purpose of preventing obstruction, nothing in paragraph (1) of this Article shall render it a contravention of this Order to cause or permit any vehicle being used for fire brigade, ambulance or police purposes or any vehicle being used for any purpose or eventuality specified in paragraph (1) of Article 21 of this Order to be left in the pay and display parking place or part thereof during any such period when the use thereof has been suspended, or to any other vehicle so left if that vehicle is left with the permission of a police officer in uniform or a traffic warden.

PART 3

ENFORCEMENT OF RESTRICTIONS

24. The Council shall, on or in the vicinity of a restricted road:
- (1) Highlight each restricted area with notices, signs and road surface markings in accordance with the Traffic Signs Regulations and General Directions Act 1994;
- (2) Maintain and from time to time alter the said notices, signs and road-surface markings;
- (3) Carry out such other work as is reasonably required for the purpose of the satisfactory operation of a restricted road.

25. The Council shall appoint parking attendants whose duty it shall be to patrol and enforce the waiting and parking restrictions imposed by the Articles of this Order.
26. Where a parking attendant is of the opinion that any of the provisions contained in this Order have been contravened or not complied with in respect of a restricted road, he or she may attach to the vehicle in a conspicuous position or, at his or her discretion, hand the notice to a person whom he or she has reason to believe has incurred a penalty charge under this Order a Penalty Charge Notice ("PCN") in accordance with Section 66 of the Road Traffic Act 1991 (as amended).
27. Upon issue of a PCN, the procedure by which enforcement will be carried out will be:
- (1) If payment is made within fourteen days of issue of the PCN, the fee shall be one half of the amount stated on the PCN.
 - (2) For fourteen days thereafter, the charge incurred will be the whole of the amount stated on the PCN.
 - (3) Twenty-eight days after issue of the PCN, the Council will serve a Notice to Owner stating that the Penalty Charge remains unpaid and that, if payment is not received within a further thirty-five days, it may be increased to one and one half times the amount stated on the PCN.
 - (4) After the said thirty-five days, the Council will serve on the owner of the vehicle a Charge Certificate, increasing the charge to one and one half times the amount stated on the PCN.
 - (5) Fourteen days later, the Council will register the debt with the Traffic Enforcement Centre at Northampton County Court, an Order for Recovery will be sent to the owner of the vehicle and the charge will be increased to include any fees incurred during registration.
 - (6) After a further twenty-one days, the Council will obtain from the Traffic Enforcement Centre a Warrant allowing bailiffs to recover the debt. The warrant will be enforceable for twelve months from issue and any expenses incurred by the bailiffs, as set out in the Enforcement of Road Traffic Debts (Certified Bailiffs) Regulations 1993, will be added to the amount owed.

28. The penalty charge shall be paid to the Council either by cheque or postal order which shall be delivered or sent by post to the Council's authorised agent, by cash, credit or debit card, cheque or postal order in person at the said agent's office, or by credit or debit card over the telephone to the said agent's office so as to reach the agent during office hours on or before the payment day, provided that if the said payment day falls upon a day on which the said agent's office is closed, the period within which payment of the said charge shall be made to the Council shall be extended to the next full day on which the said agent's office is open.
29. The recipient of a Penalty Charge Notice may make representations against the enforcement of the penalty at any time until the registration of the debt at the Traffic Enforcement Centre. Such action may alter the progression of the process set out above.

SCHEDULE 1

PREMIUM RATE PAY AND DISPLAY PARKING PLACES

EXCEPT WITHIN THE MARKED BICYCLE/MOTOR CYCLE AND DISABLED PERSONS' PARKING PLACES.

**BETWEEN 7.00 AM AND 6.00 PM ON EVERY DAY OF THE WEEK, FOR A
MAXIMUM PERIOD OF 5 HOURS, RETURN PROHIBITED WITHIN ONE
HOUR.**

AVEBURY BOULEVARD

THE SOUTH-EAST VEHICULAR ACCESSWAY – NORTH-WEST SIDE

PD1 a From the north-east side of the porte cochere south-west of the junction with Grafton Gate West to the junction with Grafton Gate West.

THE SOUTH-EAST VEHICULAR ACCESSWAY – SOUTH-EAST SIDE

PD1 b From the north-east side of the porte cochere south-west of the junction with Grafton Gate West to the junction with Grafton Gate West.

GRAFTON GATE EAST

THE NORTH-EAST VEHICULAR ACCESSWAY – NORTH-EAST SIDE

PD2 a Between the access road from Grafton Gate (between Silbury Boulevard and Portway) and Silbury Boulevard.

THE NORTH-EAST VEHICULAR ACCESSWAY – SOUTH-WEST SIDE

PD2 b Between the access road from Grafton Gate (between Silbury Boulevard and Portway) and Silbury Boulevard.

THE SOUTH-WEST VEHICULAR ACCESSWAY – NORTH-EAST SIDE

PD2 c Between the access road from Grafton Gate (between Silbury Boulevard and Portway) and Silbury Boulevard.

THE SOUTH-WEST VEHICULAR ACCESSWAY – SOUTH-WEST SIDE

PD2 d Between the access road from Grafton Gate (between Silbury Boulevard and Portway) and Silbury Boulevard.

SILBURY BOULEVARD

THE NORTH-WEST VEHICULAR ACCESSWAY – NORTH-WEST SIDE

PD3 a From North Fourth Street to the porte cochere north-east of North Fourth Street.

THE NORTH-WEST VEHICULAR ACCESSWAY – NORTH-WEST SIDE

PD3 b From the porte cochere north-east of North Fourth Street to Witan Gate.

THE NORTH-WEST VEHICULAR ACCESSWAY – SOUTH-EAST SIDE

PD3 c From North Fourth Street to the porte cochere north-east of North Fourth Street.

THE NORTH-WEST VEHICULAR ACCESSWAY – SOUTH-EAST SIDE

PD3 d From the porte cochere north-east of North Fourth Street to Witan Gate.

THE NORTH-WEST VEHICULAR ACCESSWAY – NORTH-WEST SIDE

PD4 a From the porte cochere north-east of North Sixth Street to the porte cochere south-west of Saxon Gate.

THE NORTH-WEST VEHICULAR ACCESSWAY – SOUTH-EAST SIDE

PD4 b From the porte cochere north-east of North Sixth Street to the access road to Silbury Boulevard south-west of Saxon Gate.

THE NORTH-WEST VEHICULAR ACCESSWAY – SOUTH-EAST SIDE

PD4 c From the access road to Silbury Boulevard to the porte cochere south-west of Saxon Gate.

MIDSUMMER BOULEVARD

THE NORTH-WEST VEHICULAR ACCESSWAY – NORTH-WEST SIDE

PD5 a From the porte cochere north-east of Upper Second Street to the pedestrian accessway to Bouverie Square.

THE NORTH-WEST VEHICULAR ACCESSWAY - NORTH-WEST SIDE

PD5 b From the pedestrian accessway to Bouverie Square to the porte cochere south-west of Upper Fourth Street.

THE NORTH-WEST VEHICULAR ACCESSWAY - SOUTH-EAST SIDE

PD5 c From the porte cochere north-east of Upper Second Street to the porte cochere south-west of Upper Fourth Street.

THE NORTH-WEST VEHICULAR ACCESSWAY – NORTH-WEST SIDE

PD6 a From the north-east side of the porte cochere south-west of Witan Gate to Witan Gate.

THE NORTH-WEST VEHICULAR ACCESSWAY - SOUTH-EAST SIDE

PD6 b From the north-east side of the porte cochere south-west of Witan Gate to Witan Gate.

WITAN GATE EAST

THE NORTH-EAST VEHICULAR ACCESSWAY – NORTH-EAST SIDE

PD7 a Between the access road from Witan Gate (between Silbury Boulevard and Portway) and Silbury Boulevard.

THE NORTH-EAST VEHICULAR ACCESSWAY - SOUTH-WEST SIDE

PD7 b Between the access road from Witan Gate (between Silbury Boulevard and Portway) and Silbury Boulevard.

THE SOUTH-WEST VEHICULAR ACCESSWAY - NORTH-EAST SIDE

PD7 c Between the access road from Witan Gate (between Silbury Boulevard and Portway) and Silbury Boulevard.

THE SOUTH-WEST VEHICULAR ACCESSWAY - SOUTH-WEST SIDE

PD7 d Between the access road from Witan Gate (between Silbury Boulevard and Portway) and Silbury Boulevard.

MIDSUMMER BOULEVARD

THE SOUTH-EAST VEHICULAR ACCESSWAY - NORTH-WEST SIDE

PD8 a From Lower Fourth Street to the porte cochere south-west of Witan Gate.

THE SOUTH-EAST VEHICULAR ACCESSWAY - SOUTH-EAST SIDE

PD8 b From Lower Fourth Street to the porte cochere south-west of Witan Gate.

SILBURY BOULEVARD

THE SOUTH-EAST VEHICULAR ACCESSWAY) - NORTH-WEST SIDE

PD9 a From Grafton Gate to the porte cochere situated south-west of Upper Second Street.

THE SOUTH-EAST VEHICULAR ACCESSWAY - SOUTH-EAST SIDE

PD9 b From Grafton Gate to the porte cochere situated south-west of Upper Second Street.

THE SOUTH-EAST VEHICULAR ACCESSWAY - NORTH-WEST SIDE

PD10 a From Upper Third Street to the porte cochere south-west of Upper Fourth Street.

THE SOUTH-EAST VEHICULAR ACCESSWAY - NORTH-WEST SIDE

PD10 b From the porte cochere south-west of Upper Fourth Street to Upper Fourth Street.

THE SOUTH-EAST VEHICULAR ACCESSWAY - SOUTH-EAST SIDE

PD10 c From Upper Third Street to the porte cochere south-west of Upper Fourth Street.

THE SOUTH-EAST VEHICULAR ACCESSWAY - SOUTH-EAST SIDE

PD10 d From the porte cochere south-west of Upper Fourth Street to Upper Fourth Street.

THE SOUTH-EAST VEHICULAR ACCESSWAY – NORTH-WEST SIDE

PD11 a From Witan Gate to the porte cochere south-west of Upper Fifth Street.

THE SOUTH-EAST VEHICULAR ACCESSWAY – NORTH-WEST SIDE

PD11 b From the porte cochere south-west of Upper Fifth Street to Upper Fifth Street.

THE SOUTH-EAST VEHICULAR ACCESSWAY - SOUTH-EAST SIDE

PD11 c From Witan gate to the porte cochere south-west of Upper Fifth Street.

THE SOUTH-EAST VEHICULAR ACCESSWAY - SOUTH-EAST SIDE

PD11 d From the porte cochere south-west of Upper Fifth Street to Upper Fifth Street.

MIDSUMMER BOULEVARD

THE NORTH-WEST VEHICULAR ACCESSWAY – NORTH-WEST SIDE

PD12 a From Upper Fifth Street to the porte cochere north-east of Upper Fifth Street.

THE NORTH-WEST VEHICULAR ACCESSWAY – NORTH-WEST SIDE

PD12 b From the porte cochere north-east of Upper Fifth Street to the port cochere south-west of Upper Seventh Street.

THE NORTH-WEST VEHICULAR ACCESSWAY – NORTH-WEST SIDE

PD12 c From the porte cochere south-west of Upper Seventh Street to Upper Seventh Street.

THE NORTH-WEST VEHICULAR ACCESSWAY – SOUTH-EAST SIDE

PD12 d From Upper Fifth Street to the porte cochere north-east of Upper Fifth Street.

THE NORTH-WEST VEHICULAR ACCESSWAY – SOUTH-EAST SIDE

PD12 e From the porte cochere north-east of Upper Fifth Street to the porte cochere south west of Upper Seventh Street.

THE NORTH-WEST VEHICULAR ACCESSWAY – SOUTH-EAST SIDE

PD12 f From the porte cochere south-west of Upper Seventh street to Upper Seventh street.

SAXON GATE WEST

THE NORTH-EAST VEHICULAR ACCESSWAY – NORTH-EAST SIDE

PD13 a Between the access road from Saxon Gate (between Silbury Boulevard and Midsummer Boulevard) and Silbury Boulevard.

THE NORTH-EAST VEHICULAR ACCESSWAY – SOUTH-WEST SIDE

PD13 b Between the access road from Saxon Gate (between Silbury Boulevard and Midsummer Boulevard) and Silbury Boulevard.

THE SOUTH-WEST VEHICULAR ACCESSWAY – NORTH-EAST SIDE

PD13 c Between the access road from Saxon Gate (between Silbury Boulevard and Midsummer Boulevard) and Silbury Boulevard.

THE NORTH-EAST VEHICULAR ACCESSWAY – NORTH-EAST SIDE

PD13 d Between the access road from Saxon Gate (between Silbury Boulevard and Midsummer Boulevard) and Midsummer Boulevard.

THE NORTH-EAST VEHICULAR ACCESSWAY – SOUTH-WEST SIDE

PD13 e Between the access road from Saxon Gate (between Silbury Boulevard and Midsummer Boulevard) and Midsummer Boulevard.

THE SOUTH-WEST VEHICULAR ACCESSWAY – NORTH-EAST SIDE

PD13 f Between the access road from Saxon Gate (between Silbury Boulevard and Midsummer Boulevard) and Midsummer Boulevard.

THE SOUTH-WEST VEHICULAR ACCESSWAY – SOUTH-WEST SIDE

PD13 g From Midsummer Boulevard to the accessway north-west of that point (alongside the Church of Christ the Cornerstone).

THE SOUTH-WEST VEHICULAR ACCESSWAY – SOUTH-WEST SIDE

PD13 h From the accessway north-west of Midsummer Boulevard (alongside the Church of Christ the Cornerstone) to the accessway north-west of that point.

THE SOUTH-WEST VEHICULAR ACCESSWAY – SOUTH-WEST SIDE

PD13 i Between the accessway south-east of Silbury Boulevard and north-west of Midsummer Boulevard (outside the Church of Christ the Cornerstone) opposite to the access road to Saxon Gate.

THE SOUTH-WEST VEHICULAR ACCESSWAY – SOUTH-WEST SIDE

PD13 j From the accessway south-east of Silbury Boulevard (alongside the Church of Christ the Cornerstone) to the accessway south-east of that point.

THE SOUTH-WEST VEHICULAR ACCESSWAY – SOUTH-WEST SIDE

PD13 k From Silbury Boulevard to the accessway south-east of that point (alongside the Church of Christ the Cornerstone).

THE NORTH-EAST VEHICULAR ACCESSWAY – NORTH-EAST SIDE

PD14 a Between the access road from Saxon Gate (between Avebury Boulevard and Midsummer Boulevard) and Midsummer Boulevard.

THE NORTH-EAST VEHICULAR ACCESSWAY – SOUTH-WEST SIDE

PD14 b Between the access road from Saxon Gate (between Avebury Boulevard and Midsummer Boulevard) and Midsummer Boulevard.

THE NORTH-EAST VEHICULAR ACCESSWAY – NORTH-EAST SIDE

PD14 c Between the access road from Saxon Gate (between Avebury Boulevard and Midsummer Boulevard) and Avebury Boulevard.

THE NORTH-EAST VEHICULAR ACCESSWAY – SOUTH-WEST SIDE

PD14 d Between the access road from Saxon Gate (between Avebury Boulevard and Midsummer Boulevard) and Avebury Boulevard.

MIDSUMMER BOULEVARD

THE SOUTH-EAST VEHICULAR ACCESSWAY – SOUTH-EAST SIDE

PD15 From a point 125 metres north-east of a point opposite the north-eastern kerbline of Upper Fifth Street south-westwards for a distance of 25 metres.

THE SOUTH-EAST VEHICULAR ACCESSWAY) - SOUTH-EAST SIDE

PD16 a From a point opposite the north-eastern kerbline of Upper Fifth Street to the porte cochere north-east of that point.

THE SOUTH-EAST VEHICULAR ACCESSWAY – SOUTH-EAST SIDE

PD16 b From the porte cochere north east of the north-eastern kerbline of Upper Fifth Street to the build-out north east of that point.

THE SOUTH-EAST VEHICULAR ACCESSWAY – NORTH-WEST SIDE

PD17 a From a point opposite the north-eastern kerbline of Upper Fifth Street to the porte cochere north-east of that point.

THE SOUTH-EAST VEHICULAR ACCESSWAY – NORTH-WEST SIDE

PD17 b From the porte cochere north-east of the north-eastern kerbline of Upper Fifth Street to the porte cochere south-west of the south-west kerbline of Upper Seventh Street.

THE SOUTH-EAST VEHICULAR ACCESSWAY – NORTH-WEST SIDE

PD17 c From the south-west kerbline of Upper Seventh Street to the porte cochere south-west of that point.

THE SOUTH-EAST VEHICULAR ACCESSWAY) - SOUTH-EAST SIDE

PD18 a From a point in line with the south-west kerbline of Upper Seventh Street to the build-out south-west of that point.

THE SOUTH-EAST VEHICULAR ACCESSWAY) - SOUTH-EAST SIDE

PD18 b From the build-out south-west of the south-western kerb line of Upper Seventh Street to the porte cochere south-west of that point.

AVEBURY BOULEVARD

THE SOUTH-EAST VEHICULAR ACCESSWAY - NORTH-WEST SIDE

PD19 a From South Seventh Street to the porte cochere north-east of South Seventh Street.

THE SOUTH-EAST VEHICULAR ACCESSWAY - NORTH-WEST SIDE

PD19 b From the porte cochere north-east of South Seventh Street to Saxon Gate.

THE SOUTH-EAST VEHICULAR ACCESSWAY - SOUTH-EAST SIDE

PD19 c From South Seventh Street to the porte cochere north-east of South Seventh Street.

THE SOUTH-EAST VEHICULAR ACCESSWAY - SOUTH-EAST SIDE

PD19 d From the porte cochere north-east of South Seventh Street to Saxon Gate.

SILBURY BOULEVARD

THE NORTH-WEST VEHICULAR ACCESSWAY – SOUTH-EAST SIDE

PD20 a From Saxon Gate to the porte cochere south-west of North Eighth Street.

THE NORTH-WEST VEHICULAR ACCESSWAY – SOUTH-EAST SIDE

PD20 b From the porte cochere south-west of North Eighth Street to North Eighth Street.

THE NORTH-WEST VEHICULAR ACCESSWAY – SOUTH-EAST SIDE

PD20 c From North Eighth Street to the porte cochere south-west of North Ninth Street.

THE NORTH-WEST VEHICULAR ACCESSWAY – SOUTH-EAST SIDE

PD20 d From the porte cochere south-west of North Ninth Street to North Ninth Street.

THE NORTH-WEST VEHICULAR ACCESSWAY – SOUTH-EAST SIDE

PD20 e From North Ninth Street to the porte cochere south-west of North Tenth Street.

THE NORTH-WEST VEHICULAR ACCESSWAY – SOUTH-EAST SIDE

PD20 f From the porte cochere south-west of North Tenth Street to North Tenth Street.

THE NORTH-WEST VEHICULAR ACCESSWAY – SOUTH-EAST SIDE

PD20 g From North Tenth Street to the porte cochere south-west of Secklow Gate.

THE NORTH-WEST VEHICULAR ACCESSWAY – SOUTH-EAST SIDE

PD20 h From the porte cochere south-west of Secklow Gate to Secklow Gate.

THE NORTH-WEST VEHICULAR ACCESSWAY – NORTH-WEST SIDE

PD21 a From North Tenth Street to the porte cochere south-west of Secklow Gate.

THE NORTH-WEST VEHICULAR ACCESSWAY - NORTH-WEST SIDE

PD21 b From the porte cochere south-west of Secklow Gate to the build-out/access to Secklow Gate West.

THE NORTH-WEST VEHICULAR ACCESSWAY - NORTH-WEST SIDE

PD21 c From the build-out/access to Secklow Gate West to Secklow Gate.

THE NORTH-WEST VEHICULAR ACCESSWAY - NORTH-WEST SIDE

PD22 a From Saxon Gate to the porte cochere south-west of North Eighth Street.

THE NORTH-WEST VEHICULAR ACCESSWAY - NORTH-WEST SIDE

PD22 b From the porte cochere south-west of North Eighth Street to North Eighth Street.

THE NORTH-WEST VEHICULAR ACCESSWAY - NORTH-WEST SIDE

PD22 c From North Eighth Street to the porte cochere south-west of North Ninth Street.

THE NORTH-WEST VEHICULAR ACCESSWAY - NORTH-WEST SIDE

PD22 d From the porte cochere south-west of North Ninth Street to North Ninth Street.

SAXON GATE EAST

THE NORTH-EAST VEHICULAR ACCESSWAY – NORTH-EAST SIDE

PD23 a Between the access road from Saxon Gate (between Silbury Boulevard and Portway) and Silbury Boulevard.

THE NORTH-EAST VEHICULAR ACCESSWAY – SOUTH-WEST SIDE

PD23 b Between the access road from Saxon Gate (between Silbury Boulevard and Portway) and Silbury Boulevard.

THE SOUTH-WEST VEHICULAR ACCESSWAY - NORTH-EAST SIDE

PD23 c Between the access road from Saxon Gate (between Silbury Boulevard and Portway) and Silbury Boulevard.

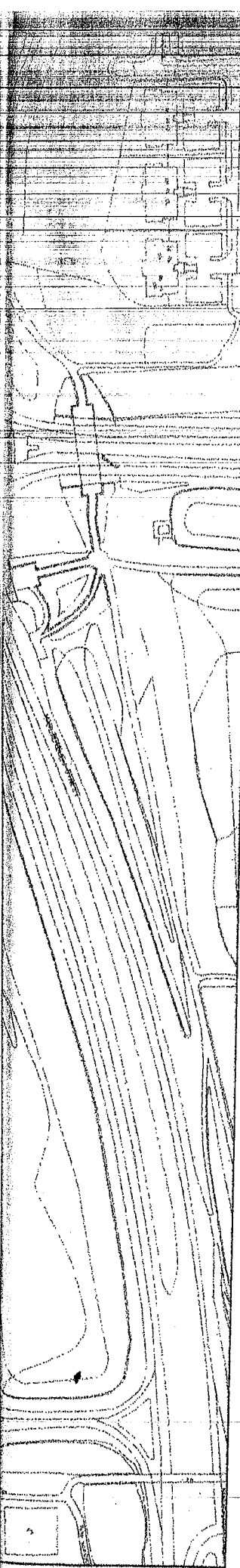
THE SOUTH-WEST VEHICULAR ACCESSWAY – SOUTH-WEST SIDE

PD23 d Between the access road from Saxon Gate (between Silbury Boulevard and Portway) and Silbury Boulevard.

SECKLOW GATE WEST

THE NORTH-EAST VEHICULAR ACCESSWAY – NORTH-EAST SIDE

PD24 a Between the access road from Secklow Gate (between Silbury Boulevard and Portway) and Silbury Boulevard.



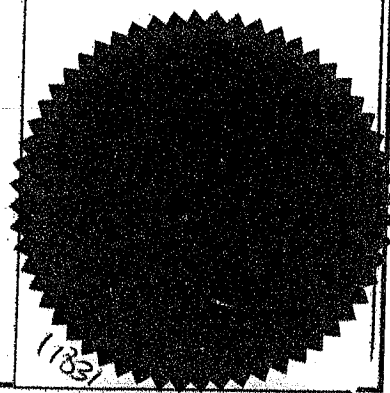
**THE COUNCIL OF THE BOROUGH OF MILTON KEYNES
(CENTRAL MILTON KEYNES) (ON-STREET PREMIUM
RATE AND LONG STAY PAY AND DISPLAY PARKING
PLACES) ORDER 2002**

Map referred to in the Council of the Borough of Milton Keynes
(Central Milton Keynes) (On-Street Premium Rate and Long Stay
Pay and Display Parking Places) Order 2002

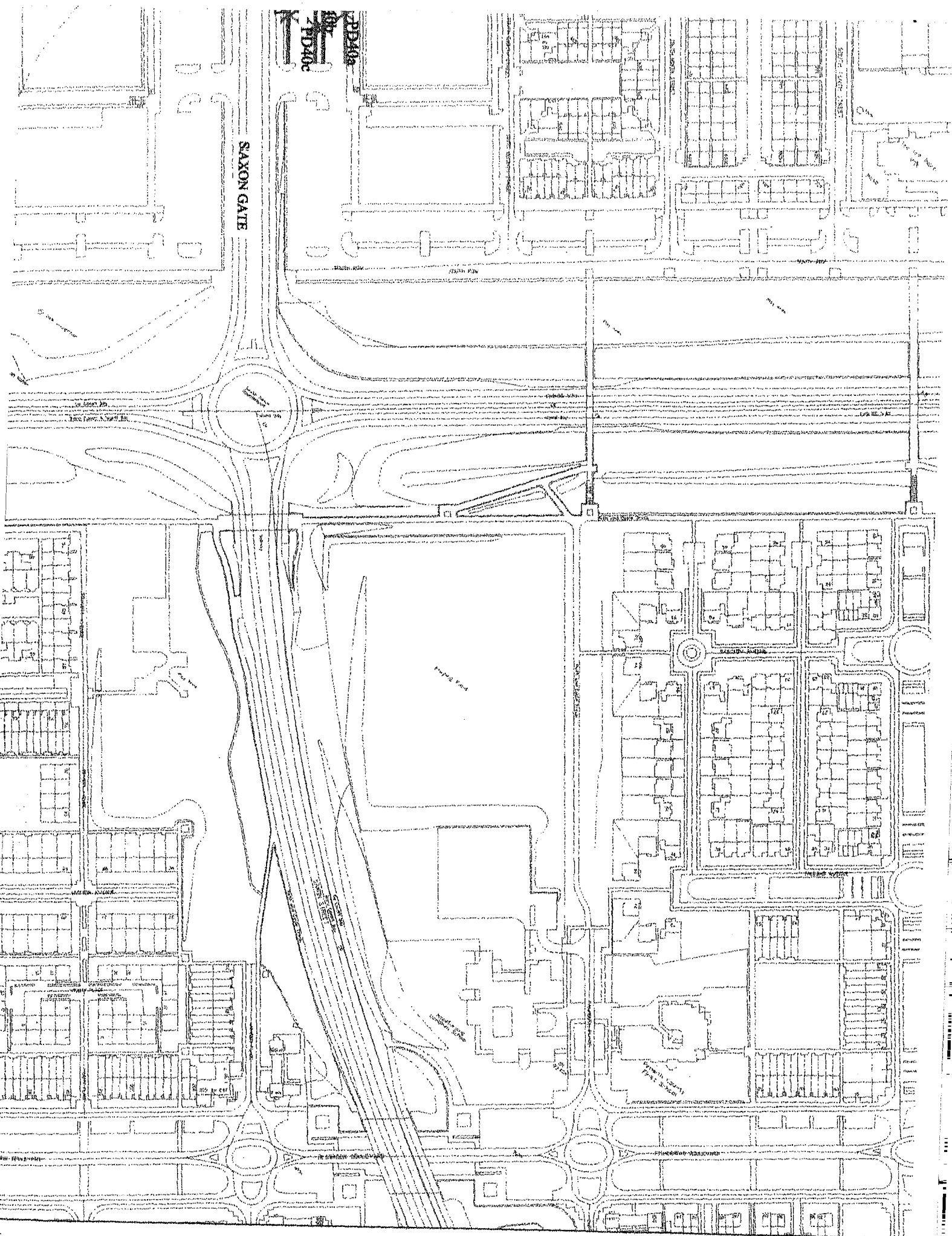
Scale: 1:2500

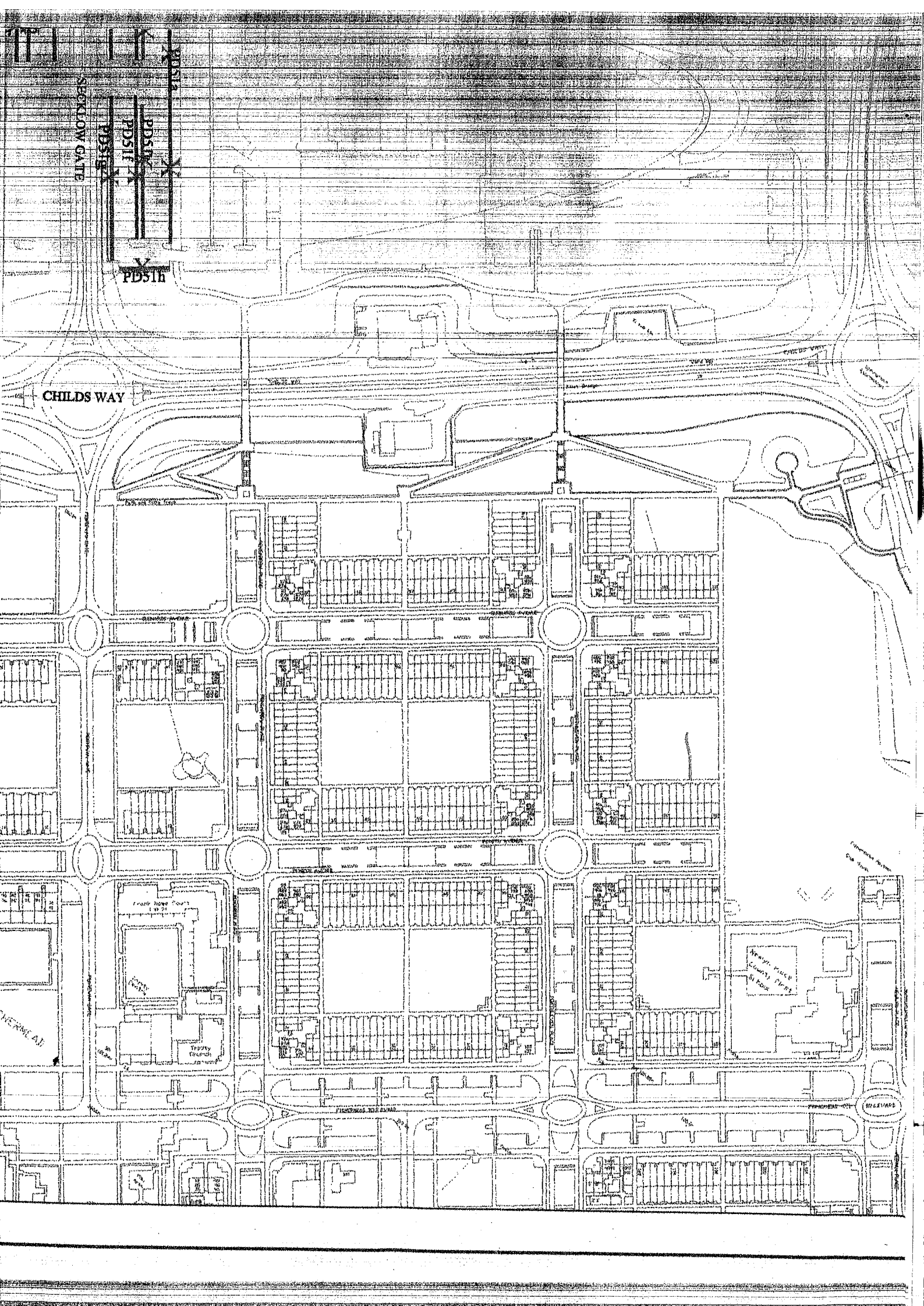
The common seal of the Council of the Borough of Milton Keynes
was hereunto affixed in the presence of:

HEAD OF LEGAL AND PROPERTY SERVICES



(183)





CHILDS WAY

PD516

PD517

PD518

PD519

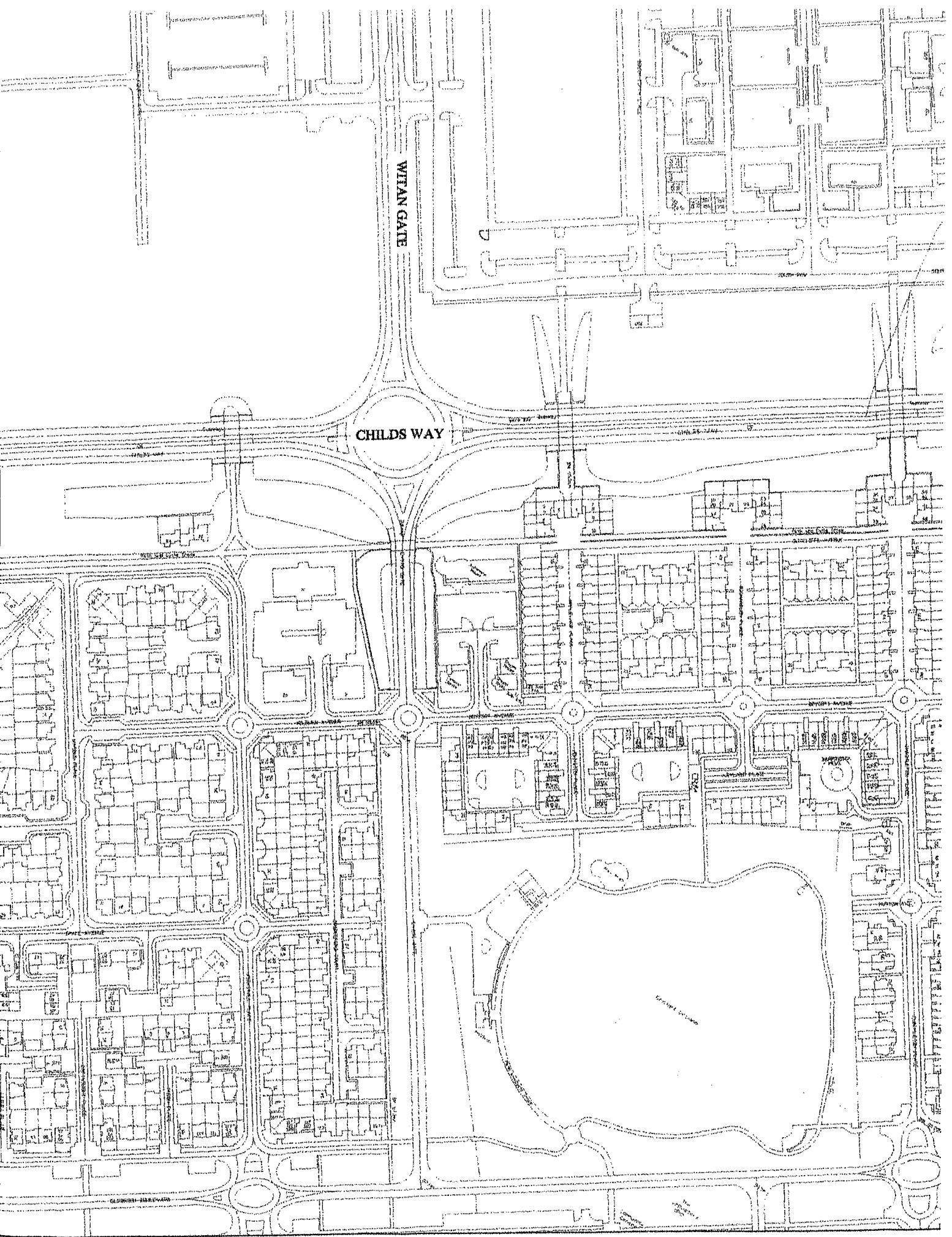
SCHOOL GATE

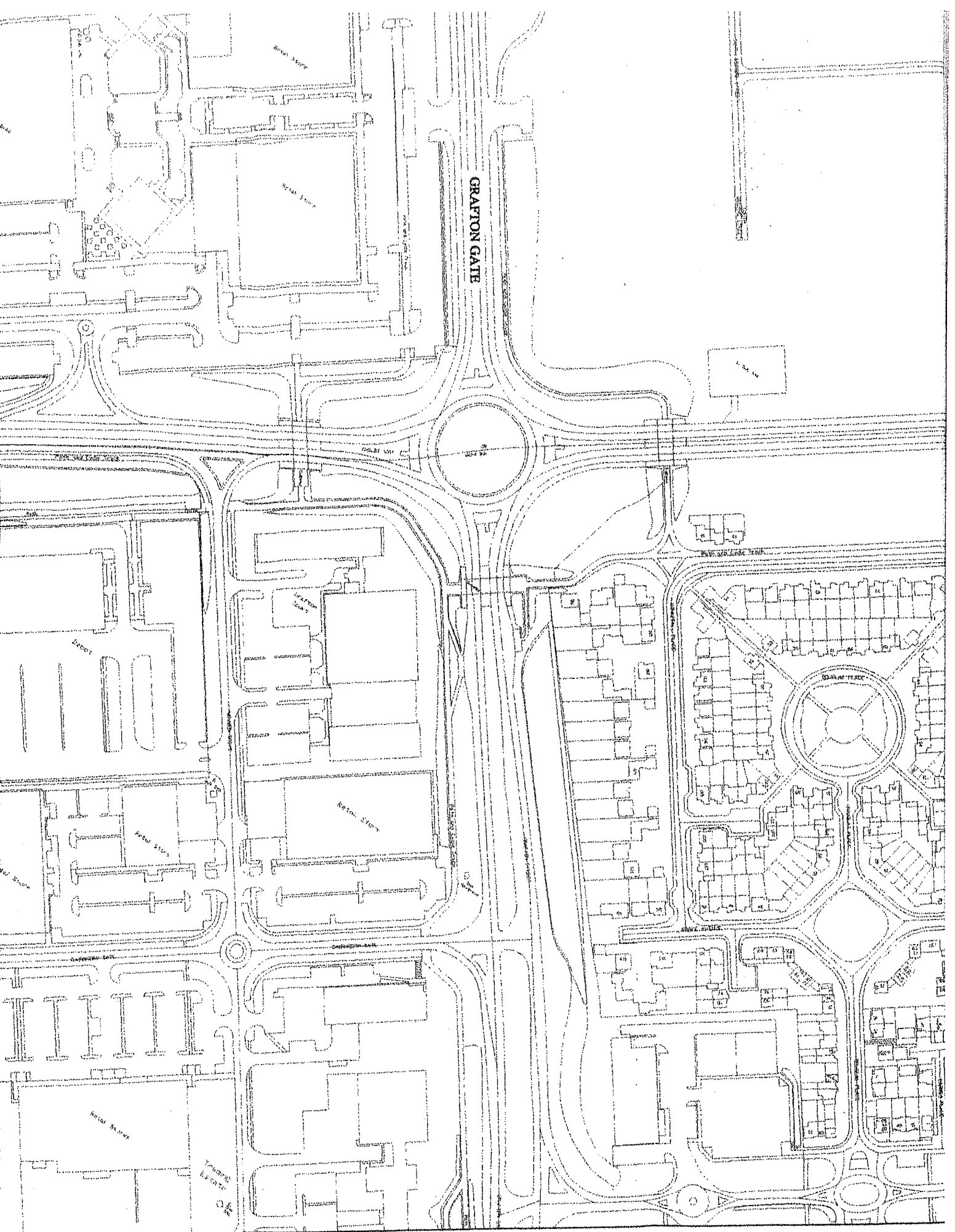
Trinity Church

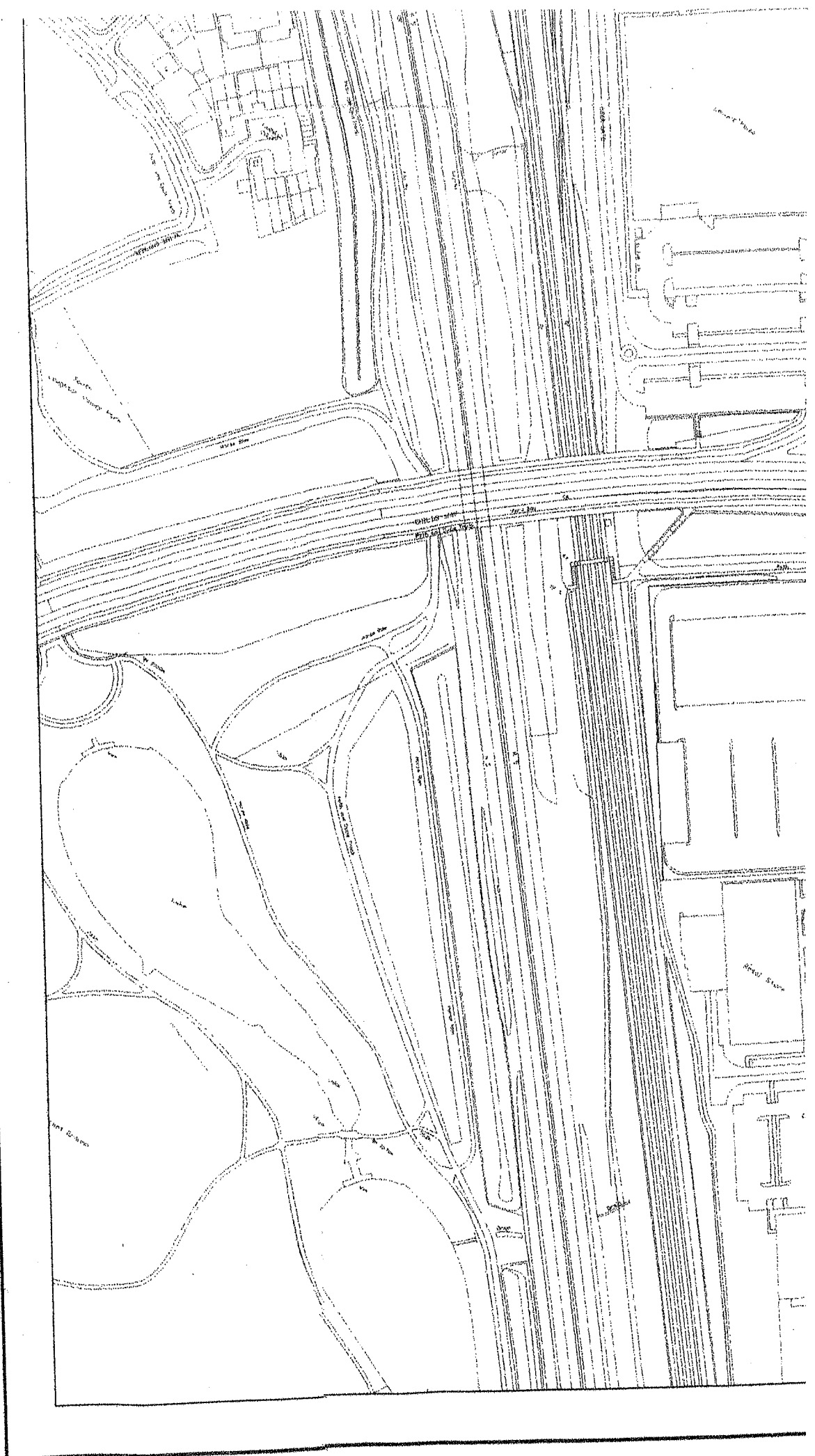
St. Paul's Church

PARKWAY

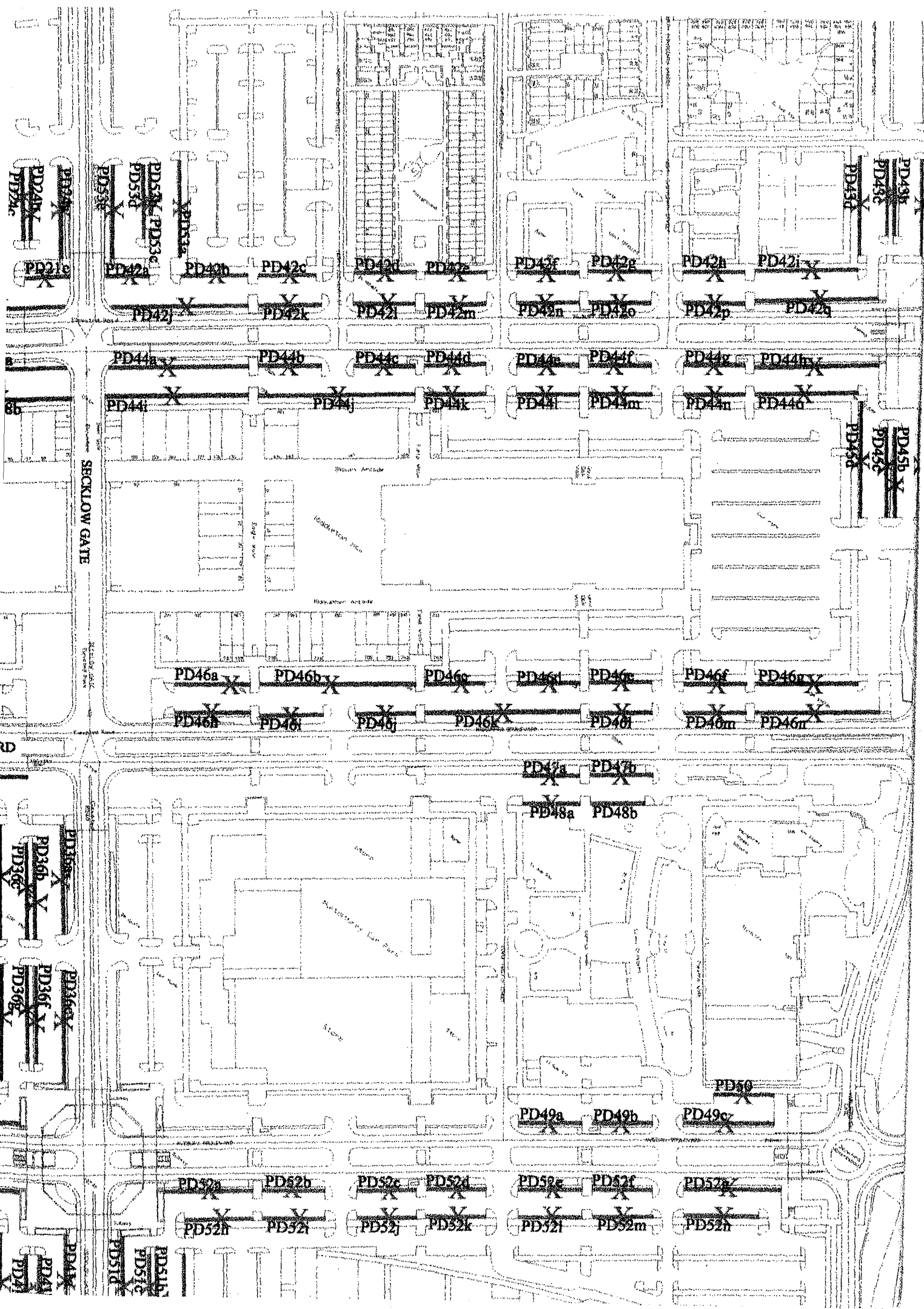
BULEVARD

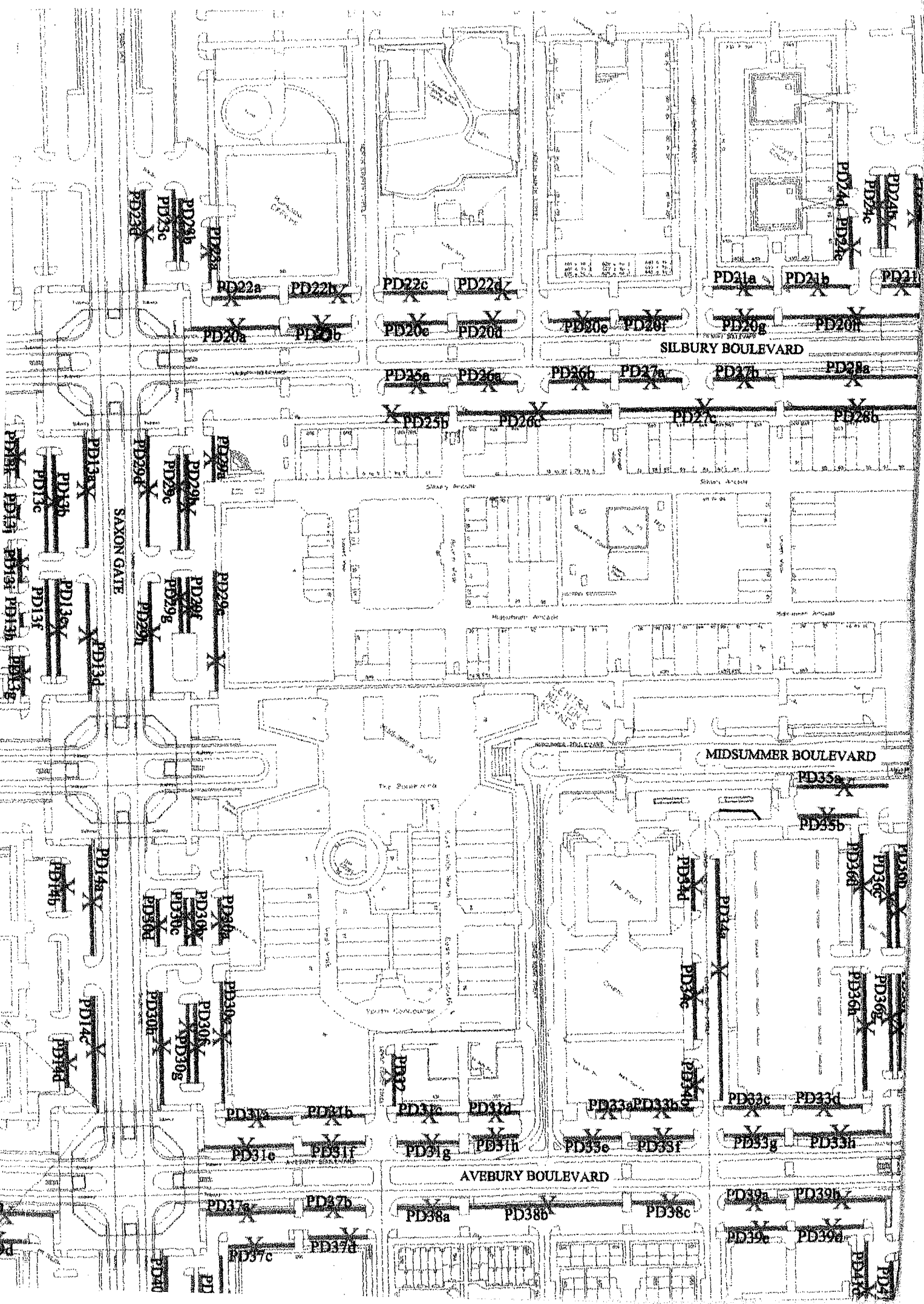


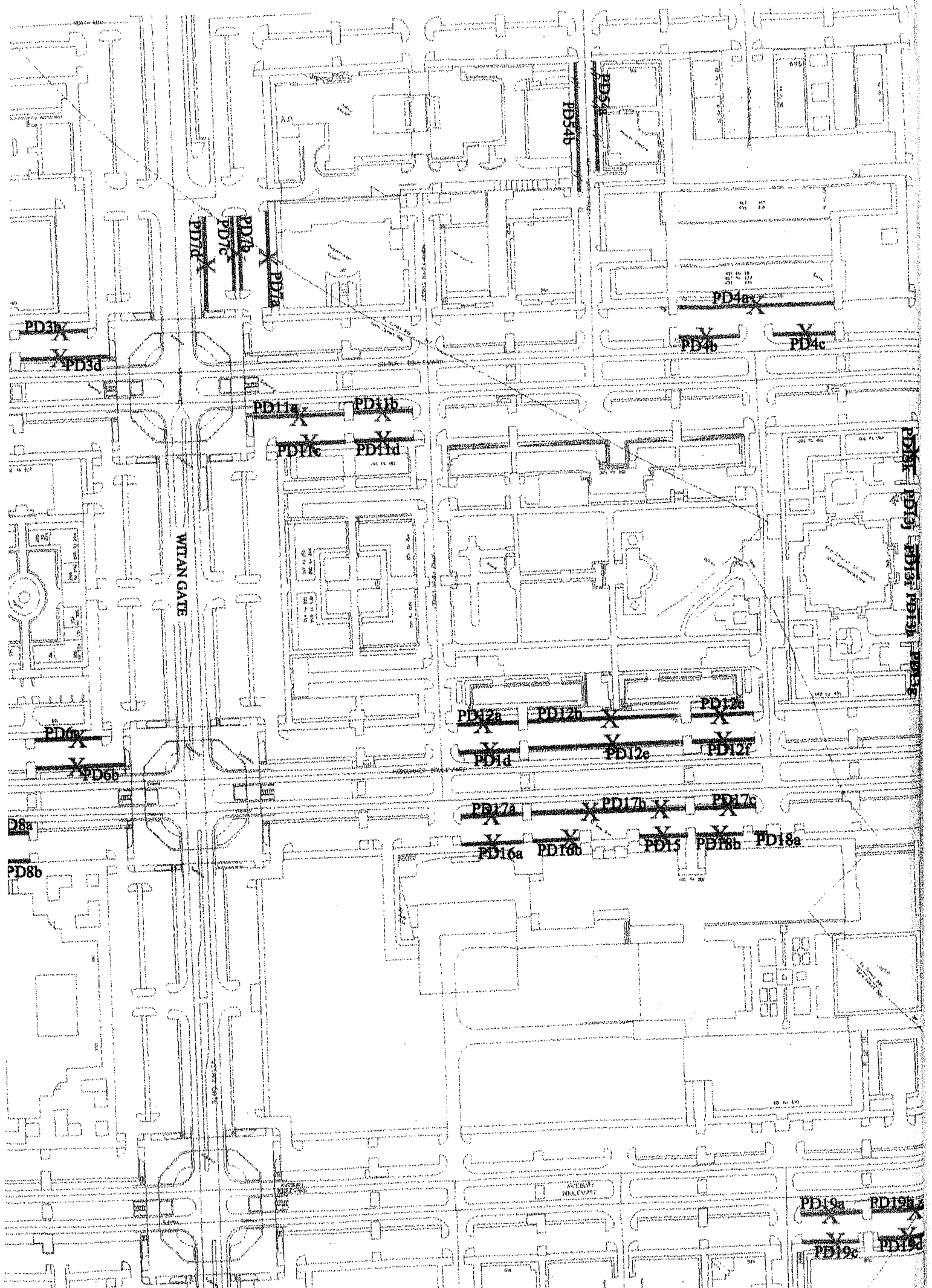




MARLBOROUGH GATE







PD33x
X PD33d

PD7b
PD7c
X PD7d
X PD7a

PD54b

PD54a

PD4b

PD4c

PD4ax

PD11a

PD11b

PD11c

PD11d

PD6x

X PD6b

PD12a

PD12b

PD12c

X PD1d

X PD12e

X PD12f

PD17a

X PD17b

X PD17c

X PD16a

X PD16b

X PD15

X PD16b

PD18a

PD8a

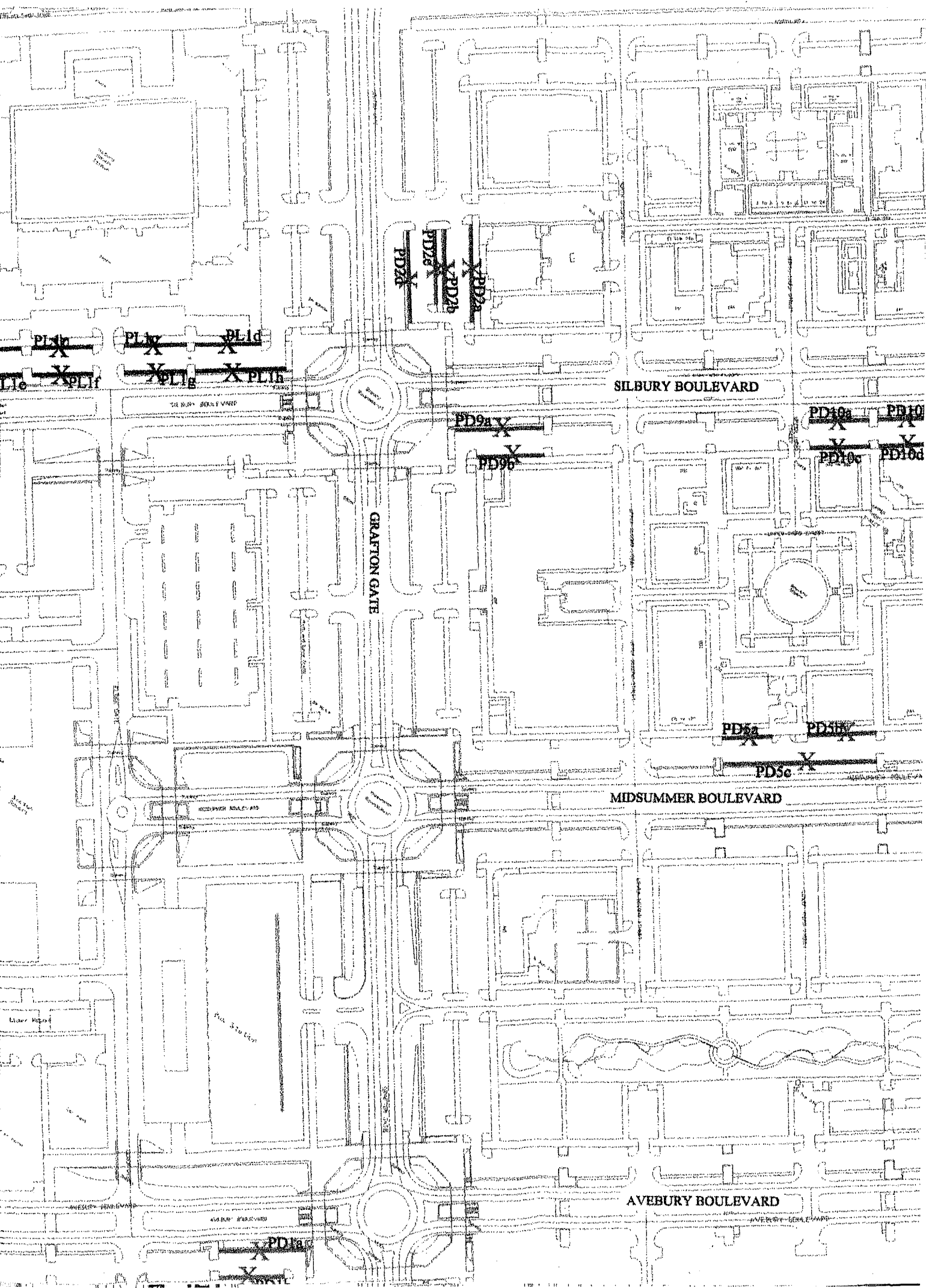
PD8b

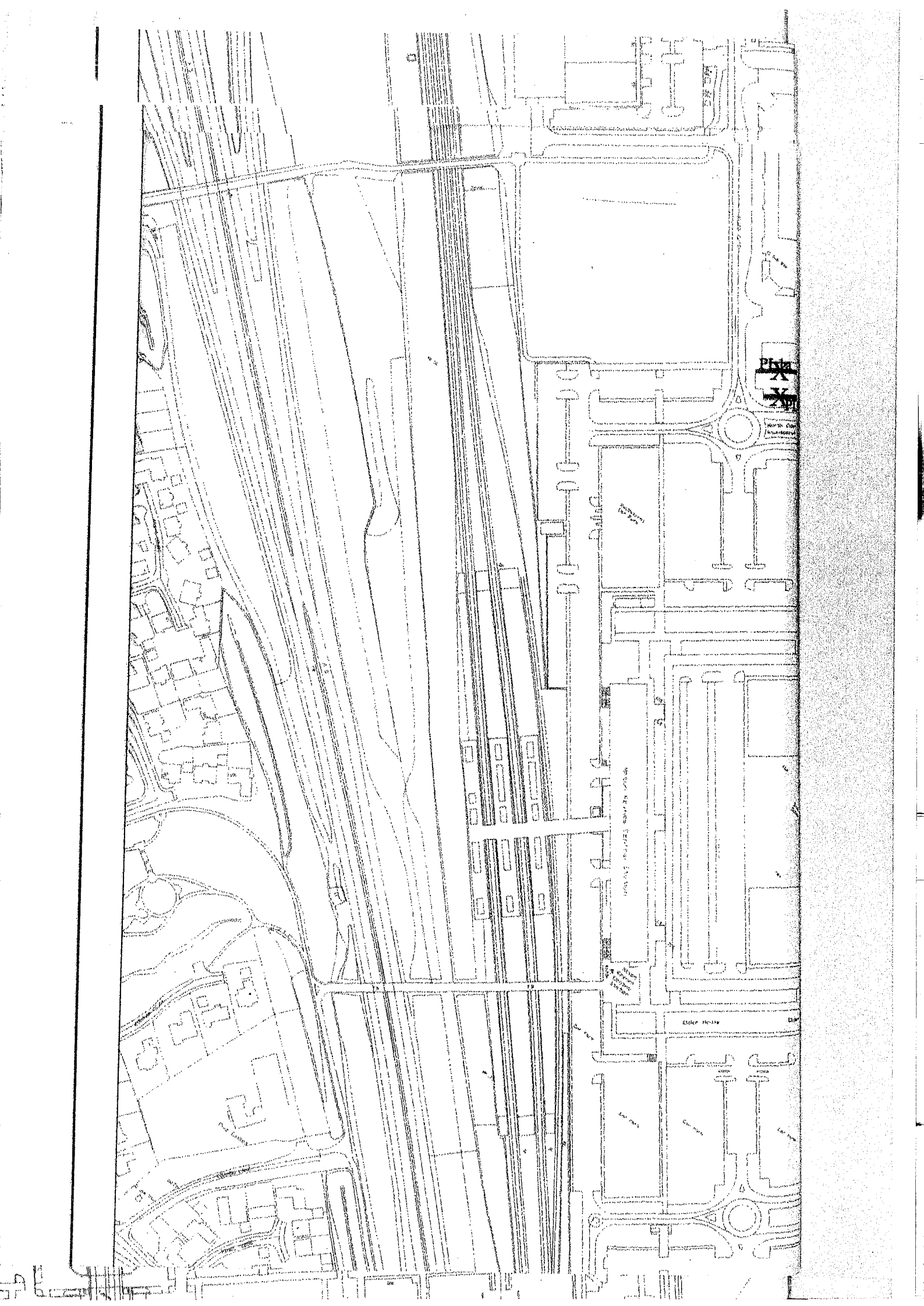
PD19a

PD19b

X PD19c


X PD19d







notes

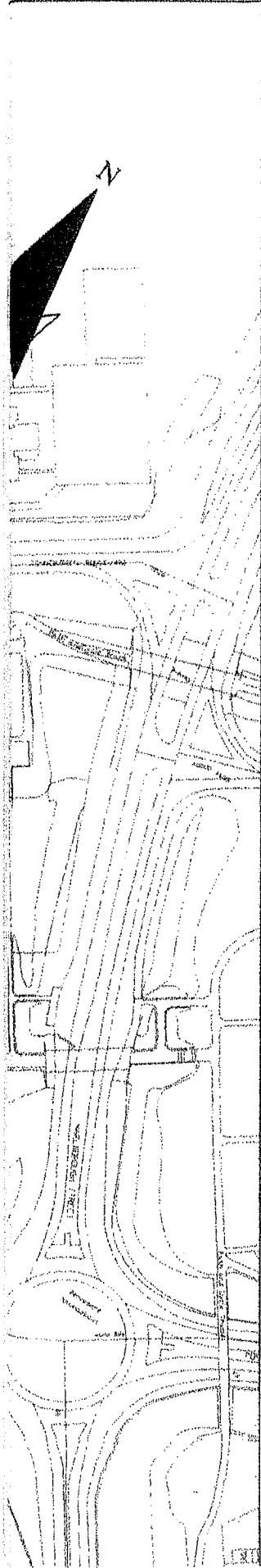
Key:

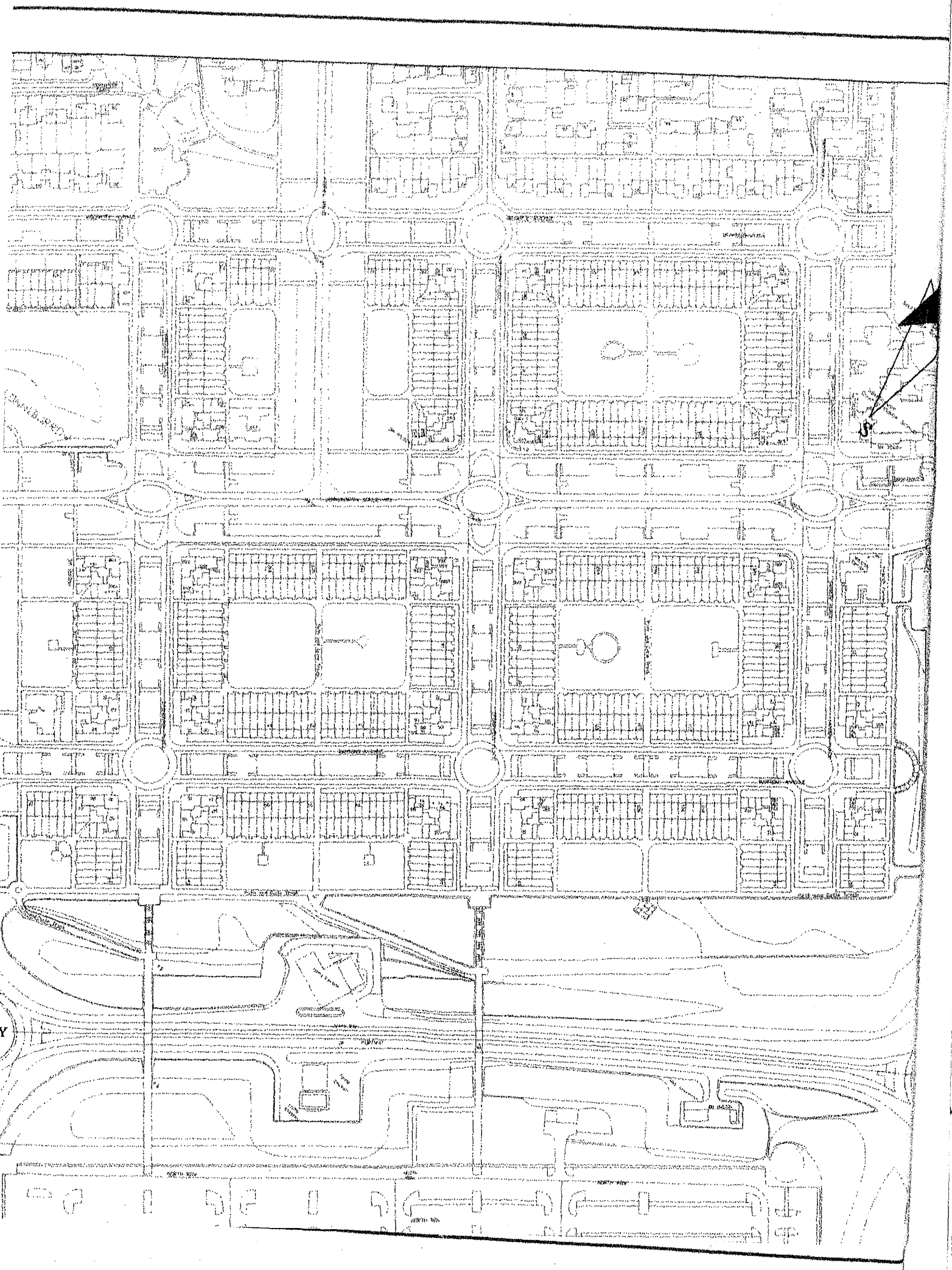
 Pay and Display
Premium Tariff
Max 5 Hours

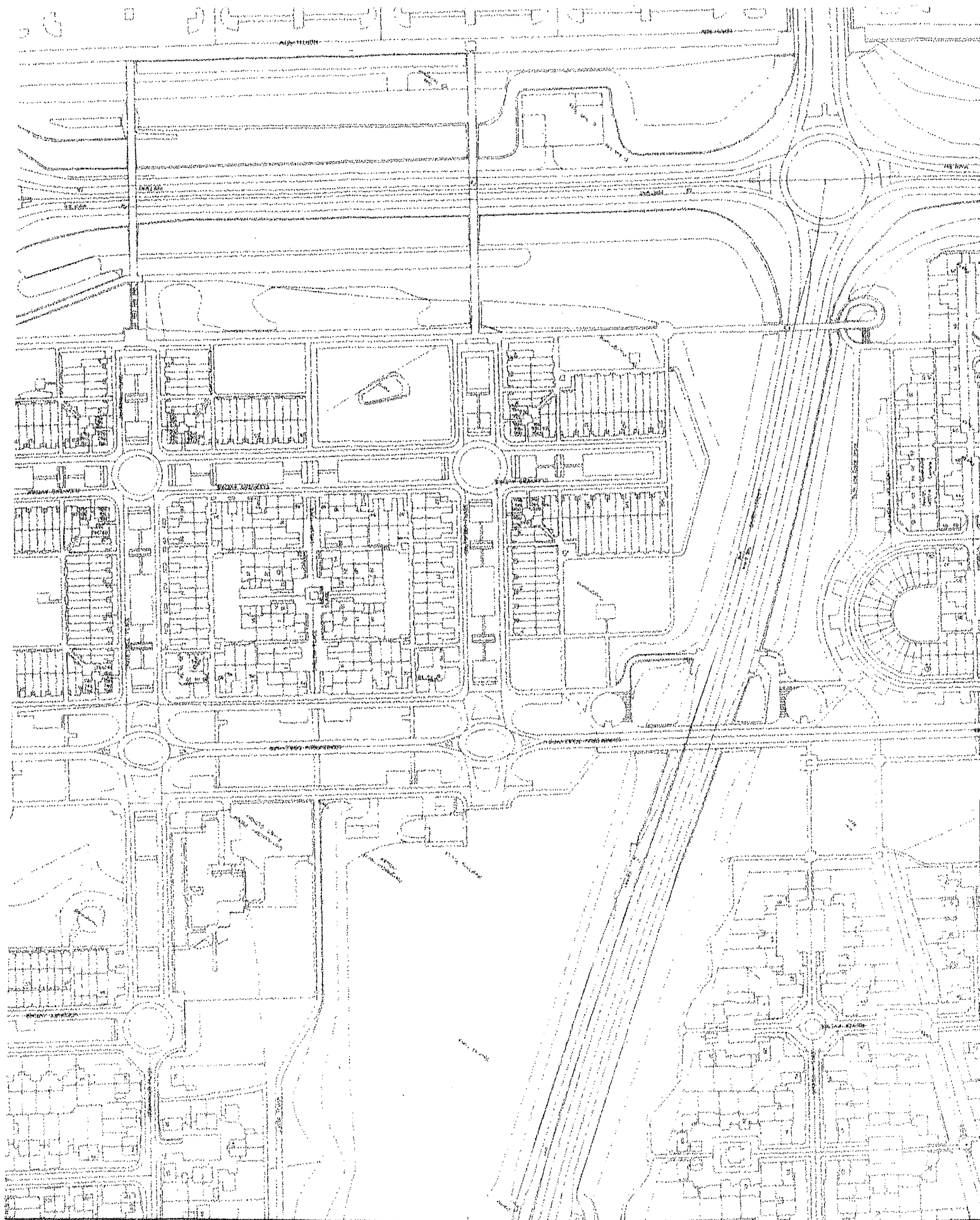
 Pay and Display
Premium Tariff
Max 2 Hours

 Long Term
Pay and Display

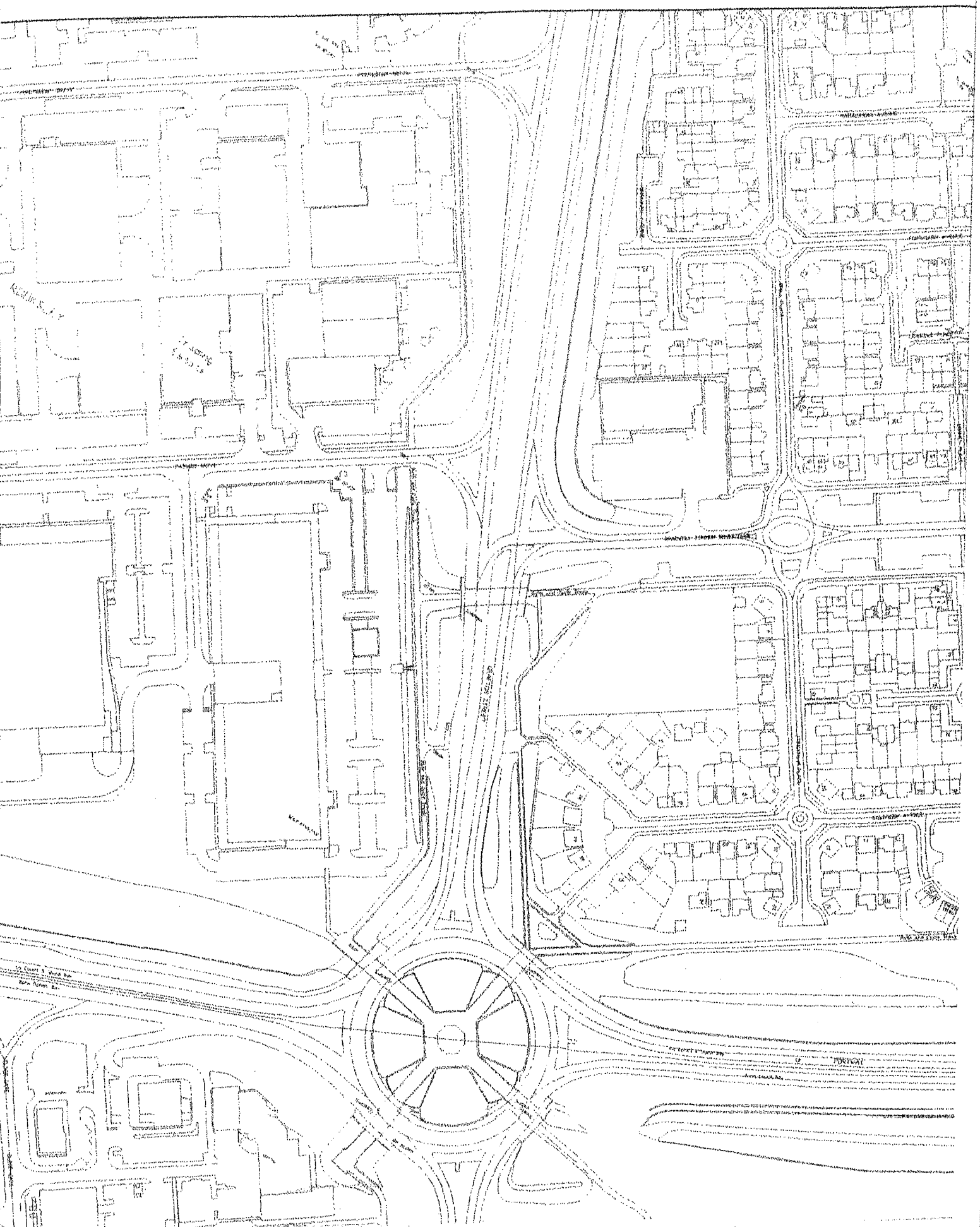
(PD45a) TRO Reference Number

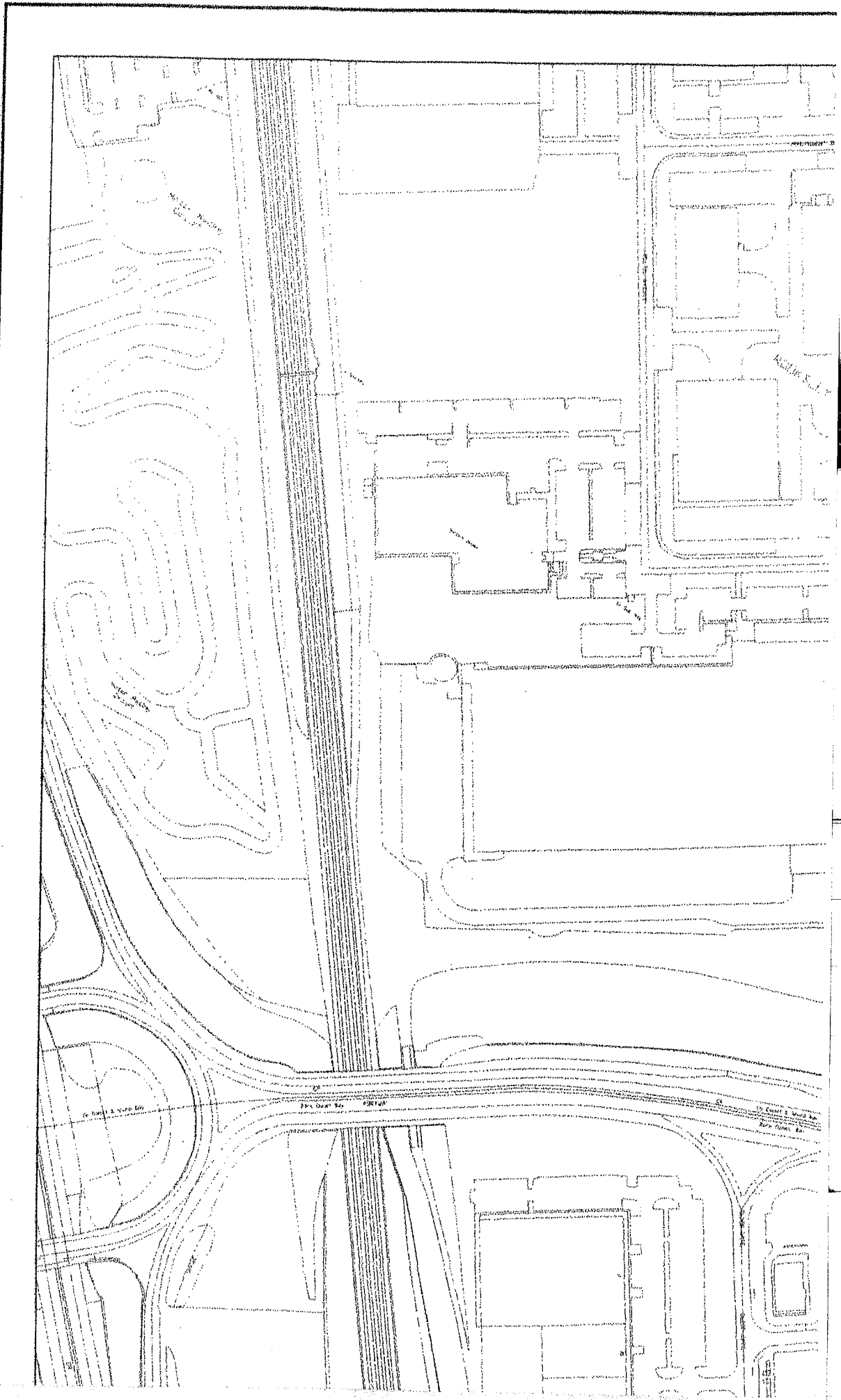












THE NORTH-EAST VEHICULAR ACCESSWAY – SOUTH-WEST SIDE

PD24 b Between the access road from Secklow Gate (between Silbury Boulevard and Portway) and Silbury Boulevard.

THE SOUTH-WEST VEHICULAR ACCESSWAY – NORTH-EAST SIDE

PD24 c Between the access road from Secklow Gate (between Silbury Boulevard and Portway) and Silbury Boulevard.

THE SOUTH-WEST VEHICULAR ACCESSWAY – SOUTH-WEST SIDE

PD24 d From the access road from Secklow Gate (between Silbury Boulevard and Portway) to the southern access to Lloyds Court.

THE SOUTH-WEST VEHICULAR ACCESSWAY – SOUTH-WEST SIDE

PD24 e From the southern access to Lloyds Court to a point in line with the access to Silbury Boulevard.

SILBURY BOULEVARD

THE SOUTH-EAST VEHICULAR ACCESSWAY – NORTH-WEST SIDE

PD25 a From the south-west side of the porte cochere leading to Acorn Walk south westwards to the south-west access to Silbury Boulevard.

THE SOUTH-EAST VEHICULAR ACCESSWAY – SOUTH-EAST SIDE

PD25 b From the south-west side of the porte cochere leading to Acorn Walk south-westwards to a point opposite the south-west access to Silbury Boulevard.

THE SOUTH-EAST VEHICULAR ACCESSWAY – NORTH-WEST SIDE

PD26 a From the north-east side of the porte cochere leading to Acorn Walk to the access road to Silbury Boulevard.

THE SOUTH-EAST VEHICULAR ACCESSWAY – NORTH-WEST SIDE

PD26 b From the access road to Silbury Boulevard to the south-west side of the porte cochere leading to Borough Walk.

THE SOUTH-EAST VEHICULAR ACCESSWAY - SOUTH-EAST SIDE

PD26 c From the north-east side of the porte cochere leading to Acorn Walk to the south-west side of the porte cochere leading to Borough Walk.

THE SOUTH-EAST VEHICULAR ACCESSWAY – NORTH-WEST SIDE

PD27 a From the north-east side of the porte cochere leading to Borough Walk to the access road to Silbury Boulevard.

THE SOUTH-EAST VEHICULAR ACCESSWAY – NORTH-WEST SIDE

PD27 b From the access road to Silbury Boulevard to the south-west side of the porte cochere leading to Crown Walk.

THE SOUTH-EAST VEHICULAR ACCESSWAY - SOUTH-EAST SIDE

PD27 c From the north-east side of the porte cochere leading to Borough Walk to the south-west side of the porte cochere leading to Crown Walk.

THE SOUTH-EAST VEHICULAR ACCESSWAY – NORTH-WEST SIDE

PD28 a From the north-east side of the porte cochere leading to Crown Walk to Secklow Gate.

THE SOUTH-EAST VEHICULAR ACCESSWAY - SOUTH-EAST SIDE

PD28 b From the north-east side of the porte cochere leading to Crown Walk to Secklow Gate.

SAXON GATE EAST

THE NORTH-EAST VEHICULAR ACCESSWAY – NORTH-EAST SIDE

PD29 a Between the build-out north-west of the access road from Saxon Gate (between Silbury Boulevard and Midsummer Boulevard) and Silbury Boulevard.

THE NORTH-EAST VEHICULAR ACCESSWAY - SOUTH-WEST SIDE

PD29 b Between the access road from Saxon Gate (between Silbury Boulevard and Midsummer Boulevard) and Silbury Boulevard.

THE SOUTH-WEST VEHICULAR ACCESSWAY – NORTH-EAST SIDE

PD29 c Between the access road from Saxon Gate (between Silbury Boulevard and Midsummer Boulevard) and Silbury Boulevard.

THE SOUTH-WEST VEHICULAR ACCESSWAY - SOUTH-WEST SIDE

PD29 d Between the access road from Saxon Gate (between Silbury Boulevard and Midsummer Boulevard) and Silbury Boulevard.

THE NORTH-EAST VEHICULAR ACCESSWAY – NORTH-EAST SIDE

PD29 e Between the access road from Saxon Gate (between Silbury Boulevard and Midsummer Boulevard) and Midsummer Boulevard.

THE NORTH-EAST VEHICULAR ACCESSWAY – SOUTH-WEST SIDE

PD29 f Between the access road from Saxon Gate (between Silbury Boulevard and Midsummer Boulevard) and Midsummer Boulevard.

THE SOUTH-WEST VEHICULAR ACCESSWAY – NORTH-EAST SIDE

PD29 g Between the access road from Saxon Gate (between Silbury Boulevard and Midsummer Boulevard) and Midsummer Boulevard.

THE SOUTH-WEST VEHICULAR ACCESSWAY – SOUTH-WEST SIDE

PD29 h Between the access road from Saxon Gate (between Silbury Boulevard and Midsummer Boulevard) and Midsummer Boulevard.

THE NORTH-EAST VEHICULAR ACCESSWAY – NORTH-EAST SIDE

PD30 a From the access road from Saxon Gate (between Midsummer Boulevard and Avebury Boulevard) north-westwards for a distance of 23 metres.

THE NORTH-EAST VEHICULAR ACCESSWAY – SOUTH-WEST SIDE

PD30 b From the access road from Saxon Gate (between Midsummer Boulevard and Avebury Boulevard) north-westwards for a distance of 23 metres.

THE SOUTH-WEST VEHICULAR ACCESSWAY – NORTH-EAST SIDE

PD30 c From the access road from Saxon Gate (between Midsummer Boulevard and Avebury Boulevard) north-westwards for a distance of 23 metres.

THE SOUTH-WEST VEHICULAR ACCESSWAY – SOUTH-WEST SIDE

PD30 d From the access road from Saxon Gate (between Midsummer Boulevard and Avebury Boulevard) north-westwards for a distance of 23 metres.

THE NORTH-EAST VEHICULAR ACCESSWAY – NORTH-EAST SIDE

PD30 e Between the access road from Saxon Gate (between Midsummer Boulevard and Avebury Boulevard) and Avebury Boulevard.

THE NORTH-EAST VEHICULAR ACCESSWAY – SOUTH-WEST SIDE

PD30 f Between the access road from Saxon Gate (between Midsummer Boulevard and Avebury Boulevard) and Avebury Boulevard.

THE SOUTH-WEST VEHICULAR ACCESSWAY – NORTH-EAST SIDE

PD30 g Between the access road from Saxon Gate (between Midsummer Boulevard and Avebury Boulevard) and Avebury Boulevard.

THE SOUTH-WEST VEHICULAR ACCESSWAY – SOUTH-WEST SIDE

PD30 h Between the access road from Saxon Gate (between Midsummer Boulevard and Avebury Boulevard) and Avebury Boulevard.

AVEBURY BOULEVARD

THE NORTH-WEST VEHICULAR ACCESSWAY – NORTH-WEST SIDE

PD31 a From Saxon Gate to the porte cochere south-west of Lower Eighth Street.

THE NORTH-WEST VEHICULAR ACCESSWAY – NORTH-WEST SIDE

PD31 b From the porte cochere south-west of Lower Eighth Street to Lower Eighth Street.

THE NORTH-WEST VEHICULAR ACCESSWAY – NORTH-WEST SIDE

PD31 c From Lower Eighth Street to the porte cochere south-west of Lower Ninth Street.

THE NORTH-WEST VEHICULAR ACCESSWAY – NORTH-WEST SIDE

PD31 d From the porte cochere south-west of Lower Ninth Street to Lower Ninth Street.

THE NORTH-WEST VEHICULAR ACCESSWAY – SOUTH-EAST SIDE

PD31 e From Saxon Gate to the porte cochere south-west of Lower Eighth Street.

THE NORTH-WEST VEHICULAR ACCESSWAY – SOUTH-EAST SIDE

PD31 f From the porte cochere south-west of Lower Eighth Street to Lower Eighth Street.

THE NORTH-WEST VEHICULAR ACCESSWAY – SOUTH-EAST SIDE

PD31 g From Lower Eighth Street to the porte cochere south-west of Lower Ninth Street.

THE NORTH-WEST VEHICULAR ACCESSWAY – SOUTH-EAST SIDE

PD31 h From the porte cochere south-west of Lower Ninth Street to Lower Ninth Street.

LOWER EIGHTH STREET

NORTH EAST SIDE

PD32 From Avebury Boulevard to the link road between Lower Eighth Street and Lower Ninth Street.

AVEBURY BOULEVARD

THE NORTH-WEST VEHICULAR ACCESSWAY – NORTH-WEST SIDE

PD33 a From Lower Ninth Street to the porte cochere south-west of Lower Tenth Street.

THE NORTH-WEST VEHICULAR ACCESSWAY – NORTH-WEST SIDE

PD33 b From the porte cochere south-west of Lower Tenth Street to Lower Tenth Street.

THE NORTH-WEST VEHICULAR ACCESSWAY – NORTH-WEST SIDE

PD33 c From Lower Tenth Street to the porte cochere south-west of Secklow Gate.

THE NORTH-WEST VEHICULAR ACCESSWAY – NORTH-WEST SIDE

PD33 d From the porte cochere south-west of Secklow Gate to Secklow Gate.

THE NORTH-WEST VEHICULAR ACCESSWAY – SOUTH-EAST SIDE

PD33 e From Lower Ninth Street to the porte cochere south-west of Lower Tenth Street.

THE NORTH-WEST VEHICULAR ACCESSWAY – SOUTH-EAST SIDE

PD33 f From the porte cochere south-west of Lower Tenth Street to Lower Tenth Street.

THE NORTH-WEST VEHICULAR ACCESSWAY – SOUTH-EAST SIDE

PD33 g From Lower Tenth Street to the porte cochere south-west of Secklow Gate.

THE NORTH-WEST VEHICULAR ACCESSWAY – SOUTH-EAST SIDE

PD33 h From the porte cochere south-west of Secklow Gate to Secklow Gate.

LOWER TENTH STREET

NORTH-EAST SIDE

PD34 a From Avebury Boulevard up to the turning area.

SOUTH-WEST SIDE

PD34 b From Avebury Boulevard to the access to the multi-storey car park north-west of that point.

SOUTH-WEST SIDE

PD34 c From the access to the multi-storey car park to the build-out north-west of that point.

SOUTH-WEST SIDE

PD34 d From the turning area to the build-out south-east of that point.

MIDSUMMER BOULEVARD

THE SOUTH-EAST VEHICULAR ACCESSWAY – NORTH-WEST SIDE

PD35 a From the north-east side of the porte cochere leading to Crown Walk to Secklow Gate.

THE SOUTH-EAST VEHICULAR ACCESSWAY – SOUTH-EAST SIDE

PD35 b From the north-east side of the porte cochere leading to Crown Walk to Secklow Gate.

SECKLOW GATE WEST

THE NORTH-EAST VEHICULAR ACCESSWAY – NORTH-EAST SIDE

PD36 a Between the access road from Secklow Gate (between Midsummer Boulevard and Avebury Boulevard) and Midsummer Boulevard.

THE NORTH-EAST VEHICULAR ACCESSWAY – SOUTH-WEST SIDE

PD36 b Between the access road from Secklow Gate (between Midsummer Boulevard and Avebury Boulevard) and Midsummer Boulevard.

THE SOUTH-WEST VEHICULAR ACCESSWAY – NORTH-EAST SIDE

PD36 c Between the access road from Secklow Gate (between Midsummer Boulevard and Avebury Boulevard) and Midsummer Boulevard.

THE SOUTH-WEST VEHICULAR ACCESSWAY – SOUTH-WEST SIDE

PD36 d Between the access road from Secklow Gate (between Midsummer Boulevard and Avebury Boulevard) and Midsummer Boulevard.

THE NORTH-EAST VEHICULAR ACCESSWAY – NORTH-EAST SIDE

PD36 e Between the access road from Secklow Gate (between Midsummer Boulevard and Avebury Boulevard) and Avebury Boulevard.

THE NORTH-EAST VEHICULAR ACCESSWAY – SOUTH-WEST SIDE

PD36 f Between the access road from Secklow Gate (between Midsummer Boulevard and Avebury Boulevard) and Avebury Boulevard.

THE SOUTH-WEST VEHICULAR ACCESSWAY – NORTH-EAST SIDE

PD36 g Between the access road from Secklow Gate (between Midsummer Boulevard and Avebury Boulevard) and Avebury Boulevard

THE SOUTH-WEST VEHICULAR ACCESSWAY – SOUTH-WEST SIDE

PD36 h Between the access road from Secklow Gate (between Midsummer Boulevard and Avebury Boulevard) and Avebury Boulevard.

AVEBURY BOULEVARD

THE SOUTH-EAST VEHICULAR ACCESSWAY – NORTH-WEST SIDE

PD37 a From Saxon Gate to the porte cochere south-west of South Eighth Street.

THE SOUTH-EAST VEHICULAR ACCESSWAY – NORTH-WEST SIDE

PD37 b From the porte cochere south-west of South Eighth Street to South Eighth Street.

THE SOUTH-EAST VEHICULAR ACCESSWAY – SOUTH-EAST SIDE

PD37 c From Saxon Gate to the porte cochere south-west of South Eighth Street.

THE SOUTH-EAST VEHICULAR ACCESSWAY – SOUTH-EAST SIDE

PD37 d From the porte cochere south-west of South Eighth Street to South Eighth Street.

THE SOUTH-EAST VEHICULAR ACCESSWAY – NORTH-WEST SIDE

PD38 a From South Eighth Street to the porte cochere south-west of South Ninth Street.

THE SOUTH-EAST VEHICULAR ACCESSWAY – NORTH-WEST SIDE

PD38 b From the porte cochere south-west of South Ninth Street to the porte cochere south-west of South Tenth Street.

THE SOUTH-EAST VEHICULAR ACCESSWAY – NORTH-WEST SIDE

PD38 c From the porte cochere south-west of South Tenth Street to South Tenth Street.

THE SOUTH-EAST VEHICULAR ACCESSWAY – NORTH-WEST SIDE

PD39 a From South Tenth Street to the porte cochere south-west of Secklow Gate.

THE SOUTH-EAST VEHICULAR ACCESSWAY – NORTH-WEST SIDE

PD39 b From the porte cochere south-west of Secklow Gate to Secklow Gate.

THE SOUTH-EAST VEHICULAR ACCESSWAY – SOUTH-EAST SIDE

PD39 c From South Tenth Street to the porte cochere south-west of Secklow Gate.

THE SOUTH-EAST VEHICULAR ACCESSWAY – SOUTH-EAST SIDE

PD39 d From the porte cochere south-west of Secklow Gate to Secklow Gate.

SAXON GATE EAST

THE NORTH-EAST VEHICULAR ACCESSWAY - NORTH-EAST SIDE

PD40 a Between the access road from Saxon Gate (between Avebury Boulevard and Childs Way) and Avebury Boulevard.

THE NORTH-EAST VEHICULAR ACCESSWAY – SOUTH-WEST SIDE

PD40 b Between the access road from Saxon Gate (between Avebury Boulevard and Childs Way) and Avebury Boulevard.

THE SOUTH-WEST VEHICULAR ACCESSWAY - NORTH-EAST SIDE

PD40 c Between the access road from Saxon Gate (between Avebury Boulevard and Childs Way) and Avebury Boulevard.

THE SOUTH-WEST VEHICULAR ACCESSWAY – SOUTH-WEST SIDE
PD40 d Between the access road from Saxon Gate (between Avebury Boulevard and Childs Way) and Avebury Boulevard.

SECKLOW GATE WEST

THE NORTH-EAST VEHICULAR ACCESSWAY – NORTH-EAST SIDE
PD41 a Between the access road from Secklow Gate (between Avebury Boulevard and Childs Way) and Avebury Boulevard.

THE NORTH-EAST VEHICULAR ACCESSWAY – SOUTH-WEST SIDE
PD41 b Between the access road from Secklow Gate (between Avebury Boulevard and Childs Way) and Avebury Boulevard.

THE SOUTH-WEST VEHICULAR ACCESSWAY – NORTH-EAST SIDE
PD41 c Between the access road from Secklow Gate (between Avebury Boulevard and Childs Way) and Avebury Boulevard.

THE SOUTH-WEST VEHICULAR ACCESSWAY – SOUTH-WEST SIDE
PD41 d Between the access road from Secklow Gate (between Avebury Boulevard and Childs Way) and Avebury Boulevard.

SILBURY BOULEVARD

THE NORTH-WEST VEHICULAR ACCESSWAY - NORTH-WEST SIDE
PD42 a From Secklow Gate to the access road into Secklow Gate East.

THE NORTH-WEST VEHICULAR ACCESSWAY - NORTH-WEST SIDE
PD42 b From the access road into Secklow Gate East to the porte cochere south-west of North Eleventh Street.

THE NORTH-WEST VEHICULAR ACCESSWAY - NORTH-WEST SIDE
PD42 c From the porte cochere south-west of North Eleventh Street to North Eleventh Street.

THE NORTH-WEST VEHICULAR ACCESSWAY - NORTH-WEST SIDE
PD42 d From North Eleventh Street to the porte cochere south-west of North Twelfth Street.

THE NORTH-WEST VEHICULAR ACCESSWAY - NORTH-WEST SIDE
PD42 e From the porte cochere south-west of North Twelfth Street to North Twelfth Street.

THE NORTH-WEST VEHICULAR ACCESSWAY - NORTH-WEST SIDE
PD42 f From North Twelfth Street to the porte cochere south-west of North Thirteenth Street.

THE NORTH-WEST VEHICULAR ACCESSWAY - NORTH-WEST SIDE
PD42 g From the porte cochere south-west of North Thirteenth Street to North Thirteenth Street.

THE NORTH-WEST VEHICULAR ACCESSWAY - NORTH-WEST SIDE
PD42 h From North Thirteenth Street to the porte cochere south-west of North Fourteenth Street.

THE NORTH-WEST VEHICULAR ACCESSWAY - NORTH-WEST SIDE

PD42 i From the porte cochere south-west of North Fourteenth Street to North Fourteenth Street.

THE NORTH-WEST VEHICULAR ACCESSWAY - SOUTH-EAST SIDE

PD42 j From Secklow Gate to the porte cochere south-west of North Eleventh Street.

THE NORTH-WEST VEHICULAR ACCESSWAY - SOUTH-EAST SIDE

PD42 k From the porte cochere south-west of North Eleventh Street to North Eleventh Street.

THE NORTH-WEST VEHICULAR ACCESSWAY - SOUTH-EAST SIDE

PD42 l From North Eleventh Street to the porte cochere south-west of North Twelfth Street.

THE NORTH-WEST VEHICULAR ACCESSWAY - SOUTH-EAST SIDE

PD42 m From the porte cochere south-west of North Twelfth Street to North Twelfth Street.

THE NORTH-WEST VEHICULAR ACCESSWAY - SOUTH-EAST SIDE

PD42 n From North Twelfth Street to the porte cochere south-west of North Thirteenth Street.

THE NORTH-WEST VEHICULAR ACCESSWAY - SOUTH-EAST SIDE

PD42 o From the porte cochere south-west of North Thirteenth Street to North Thirteenth Street.

THE NORTH-WEST VEHICULAR ACCESSWAY - SOUTH-EAST SIDE

PD42 p From North Thirteenth Street to the porte cochere south-west of North Fourteenth Street.

THE NORTH-WEST VEHICULAR ACCESSWAY - SOUTH-EAST SIDE

PD42 q From the porte cochere south-west of North Fourteenth Street to North Fourteenth Street.

NORTH FOURTEENTH STREET

THE NORTH-EAST VEHICULAR ACCESSWAY - NORTH-EAST SIDE

PD43 a From the access road from Marlborough Gate to Silbury Boulevard.

THE NORTH-EAST VEHICULAR ACCESSWAY - SOUTH-WEST SIDE

PD43 b From the access road from Marlborough Gate to Silbury Boulevard.

THE SOUTH-WEST VEHICULAR ACCESSWAY - NORTH-EAST SIDE

PD43 c From the access road from Marlborough Gate to Silbury Boulevard.

THE SOUTH-WEST VEHICULAR ACCESSWAY - SOUTH-WEST SIDE

PD43 d From the access road from Marlborough Gate to Silbury Boulevard.

SILBURY BOULEVARD

THE SOUTH-EAST VEHICULAR ACCESSWAY - NORTH-WEST SIDE

PD44 a From Secklow Gate to the porte cochere leading to Eagle Walk.

THE SOUTH-EAST VEHICULAR ACCESSWAY – NORTH-WEST SIDE

PD44 b From the porte cochere leading to Eagle Walk to the access road opposite North Eleventh Street onto Silbury Boulevard.

THE SOUTH-EAST VEHICULAR ACCESSWAY – NORTH-WEST SIDE

PD44 c From the access road opposite North Eleventh Street onto Silbury Boulevard to the porte cochere leading to Field Walk.

THE SOUTH-EAST VEHICULAR ACCESSWAY – NORTH-WEST SIDE

PD44 d From the porte cochere leading to Field Walk to the access road opposite North Twelfth Street onto Silbury Boulevard.

THE SOUTH-EAST VEHICULAR ACCESSWAY – NORTH-WEST SIDE

PD44 e From the access road opposite North Twelfth Street onto Silbury Boulevard to the porte cochere leading to Gold Oak Walk.

THE SOUTH-EAST VEHICULAR ACCESSWAY – NORTH-WEST SIDE

PD44 f From the porte cochere leading to Gold Oak Walk to the access road opposite North Thirteenth Street onto Silbury Boulevard.

THE SOUTH-EAST VEHICULAR ACCESSWAY – NORTH-WEST SIDE

PD44 g From the access road opposite North Thirteenth Street onto Silbury Boulevard to the porte cochere south-west of Marlborough Gate.

THE SOUTH-EAST VEHICULAR ACCESSWAY – NORTH-WEST SIDE

PD44 h From the porte cochere south-west of Marlborough Gate to Marlborough Gate.

THE SOUTH-EAST VEHICULAR ACCESSWAY – SOUTH-EAST SIDE

PD44 i From Secklow Gate to the porte cochere leading to Eagle Walk.

THE SOUTH-EAST VEHICULAR ACCESSWAY – SOUTH-EAST SIDE

PD44 j From the porte cochere leading to Eagle Walk to the porte cochere leading to Field Walk.

THE SOUTH-EAST VEHICULAR ACCESSWAY – SOUTH-EAST SIDE

PD44 k From the porte cochere leading to Field Walk to the access road opposite North Twelfth Street onto Silbury Boulevard.

THE SOUTH-EAST VEHICULAR ACCESSWAY – SOUTH-EAST SIDE

PD44 l From the access road opposite North Twelfth Street onto Silbury Boulevard to the porte cochere leading to Gold Oak Walk.

THE SOUTH-EAST VEHICULAR ACCESSWAY – SOUTH-EAST SIDE

PD44m From the porte cochere leading to Gold Oak Walk to the access road opposite North Thirteenth Street onto Silbury Boulevard.

THE SOUTH-EAST VEHICULAR ACCESSWAY – SOUTH-EAST SIDE

PD44 n From the access road opposite North Thirteenth Street onto Silbury Boulevard to the porte cochere south-west of Marlborough Gate.

THE SOUTH-EAST VEHICULAR ACCESSWAY – SOUTH-EAST SIDE

PD44 o From the porte cochere south-west of Marlborough Gate to Marlborough Gate.

MARLBOROUGH GATE

THE NORTH-EAST VEHICULAR ACCESSWAY – NORTH-EAST SIDE

PD45 a Between the access road from Marlborough Gate (between Silbury Boulevard and Midsummer Boulevard) and Silbury Boulevard.

THE NORTH-EAST VEHICULAR ACCESSWAY – SOUTH-WEST SIDE

PD45 b Between the access road from Marlborough Gate (between Silbury Boulevard and Midsummer Boulevard) and Silbury Boulevard.

THE SOUTH-WEST VEHICULAR ACCESSWAY – NORTH-EAST SIDE

PD45 c Between the access road from Marlborough Gate (between Silbury Boulevard and Midsummer Boulevard) and Silbury Boulevard.

THE SOUTH-WEST VEHICULAR ACCESSWAY – SOUTH-WEST SIDE

PD45 d Between the access road from Marlborough Gate (between Silbury Boulevard and Midsummer Boulevard) and Silbury Boulevard.

MIDSUMMER BOULEVARD

THE NORTH-WEST VEHICULAR ACCESSWAY – NORTH-WEST SIDE

PD46 a From the turning area near Secklow Gate to the porte cochere leading to Eagle Walk.

THE NORTH-WEST VEHICULAR ACCESSWAY – NORTH-WEST SIDE

PD46 b From the porte cochere leading to Eagle Walk to the porte cochere leading to Field Walk.

THE NORTH-WEST VEHICULAR ACCESSWAY – NORTH-WEST SIDE

PD46 c From the porte cochere leading to Field Walk to the access road opposite Lower Twelfth Street onto Silbury Boulevard.

THE NORTH-WEST VEHICULAR ACCESSWAY – NORTH-WEST SIDE

PD46 d From the access road opposite Lower Twelfth Street onto Silbury Boulevard to porte cochere leading to Gold Oak Walk.

THE NORTH-WEST VEHICULAR ACCESSWAY – NORTH-WEST SIDE

PD46 e From the porte cochere leading to Gold Oak Walk to the access road south west of Marlborough Gate.

THE NORTH-WEST VEHICULAR ACCESSWAY – NORTH-WEST SIDE

PD46 f From the access road south west of Marlborough Gate to the porte cochere south west of Marlborough Gate.

THE NORTH-WEST VEHICULAR ACCESSWAY – NORTH-WEST SIDE

PD46 g From the porte cochere south west of Marlborough Gate to Marlborough Gate.

THE NORTH-WEST VEHICULAR ACCESSWAY – SOUTH-EAST SIDE

PD46 h From the turning area near Secklow Gate to the porte cochere leading to Eagle Walk.

THE NORTH-WEST VEHICULAR ACCESSWAY – SOUTH-EAST SIDE

PD46 i From the porte cochere leading to Eagle Walk to the access road onto Midsummer Boulevard.

THE NORTH-WEST VEHICULAR ACCESSWAY – SOUTH-EAST SIDE

PD44 j From the access road onto Midsummer Boulevard to the porte cochere leading to Field Walk.

THE NORTH-WEST VEHICULAR ACCESSWAY – SOUTH-EAST SIDE

PD44 k From the porte cochere leading to Field Walk to the porte cochere leading to Gold Oak Walk.

THE NORTH-WEST VEHICULAR ACCESSWAY – SOUTH-EAST SIDE

PD46 l From the porte cochere leading to Gold Oak Walk to the access road south west of Marlborough Gate.

THE NORTH-WEST VEHICULAR ACCESSWAY – SOUTH-EAST SIDE

PD46m From the access road south west of Marlborough Gate to the porte cochere south west of Marlborough Gate.

THE NORTH-WEST VEHICULAR ACCESSWAY – SOUTH-EAST SIDE

PD46 n From the porte cochere south west of Marlborough Gate to Marlborough Gate.

THE SOUTH-EAST VEHICULAR ACCESSWAY – NORTH-WEST SIDE

PD47 a From Lower Twelfth Street to the porte cochere leading to Garrick Walk.

THE SOUTH-EAST VEHICULAR ACCESSWAY - NORTH-WEST SIDE

PD47 b Between the porte cochere leading to Garrick Walk and the access onto Midsummer Boulevard to the north-east.

THE SOUTH-EAST VEHICULAR ACCESSWAY – SOUTH-EAST SIDE

PD48 a From Lower Twelfth Street to the porte cochere leading to Garrick Walk.

THE SOUTH-EAST VEHICULAR ACCESSWAY - SOUTH-EAST SIDE

PD48 b Between the porte cochere leading to Garrick Walk and the build-out to the north-east.

AVEBURY BOULEVARD

THE NORTH-WEST VEHICULAR ACCESSWAY – SOUTH-EAST SIDE

PD49 a From Lower Twelfth Street to the porte cochere leading to Garrick Walk.

THE NORTH-WEST VEHICULAR ACCESSWAY – SOUTH-EAST SIDE

PD49 b From the porte cochere leading to Garrick Walk to the access road onto Avebury Boulevard.

THE NORTH-WEST VEHICULAR ACCESSWAY – SOUTH-EAST SIDE

PD49 c From the access road onto Avebury Boulevard to Marlborough Gate.

THE NORTH-WEST VEHICULAR ACCESSWAY – NORTH-WEST SIDE

PD50 From a point 110 metres north-east of Lower Twelfth Street north-eastwards for a distance of 32 metres.

SECKLOW GATE EAST

THE NORTH-EAST VEHICULAR ACCESSWAY – NORTH-EAST SIDE

PD51 a From Avebury Boulevard to South Row.

THE NORTH-EAST VEHICULAR ACCESSWAY – SOUTH-WEST SIDE

PD51 b Between the access road from Secklow Gate (between Avebury Boulevard to South Row) and Avebury Boulevard.

THE SOUTH-WEST VEHICULAR ACCESSWAY – NORTH-EAST SIDE

PD51 c Between the access road from Secklow Gate (between Avebury Boulevard to South Row) and Avebury Boulevard.

THE SOUTH-WEST VEHICULAR ACCESSWAY – SOUTH-WEST SIDE

PD51 d Between the access road from Secklow Gate (between Avebury Boulevard to South Row) and Avebury Boulevard.

THE NORTH-EAST VEHICULAR ACCESSWAY – SOUTH-WEST SIDE

PD51 e Between the access road from Secklow Gate (between Avebury Boulevard to South Row) and South Row.

THE SOUTH-WEST VEHICULAR ACCESSWAY – NORTH-EAST SIDE

PD51 f Between the access road from Secklow Gate (between Avebury Boulevard to South Row) and South Row.

THE SOUTH-WEST VEHICULAR ACCESSWAY – SOUTH-WEST SIDE

PD51 g Between the access road from Secklow Gate (between Avebury Boulevard to South Row) and South Row.

SOUTH-EAST SIDE

PD51 h Between the north-east and south-west vehicular accessways.

AVEBURY BOULEVARD

THE SOUTH-EAST VEHICULAR ACCESSWAY – NORTH-WEST SIDE

PD52 a From Secklow Gate to the porte cochere north east of that point.

THE SOUTH-EAST VEHICULAR ACCESSWAY – NORTH-WEST SIDE

PD52 b From the porte cochere north-east of Secklow Gate to the access road onto Avebury Boulevard.

THE SOUTH-EAST VEHICULAR ACCESSWAY – NORTH-WEST SIDE

PD52 c From the access road onto Avebury Boulevard to the porte cochere north-east of that point.

THE SOUTH-EAST VEHICULAR ACCESSWAY – NORTH-WEST SIDE

PD52 d From the porte cochere north-east of the access road onto Avebury Boulevard to the access road opposite Lower Twelfth Street.

THE SOUTH-EAST VEHICULAR ACCESSWAY – NORTH-WEST SIDE

PD52 e From a point opposite Lower Twelfth Street to the porte cochere leading to Garrick Walk.

THE SOUTH-EAST VEHICULAR ACCESSWAY – NORTH-WEST SIDE

PD52 f From the porte cochere leading to Garrick Walk to the access road onto Avebury Boulevard.

THE SOUTH-EAST VEHICULAR ACCESSWAY – NORTH-WEST SIDE

PD52 g From the access road onto Avebury Boulevard to Marlborough Gate.

THE SOUTH-EAST VEHICULAR ACCESSWAY – SOUTH-EAST SIDE

PD52 h From Secklow Gate to the porte cochere north-east of that point.

THE SOUTH-EAST VEHICULAR ACCESSWAY – SOUTH-EAST SIDE

PD52 i From the porte cochere north-east of Secklow Gate to the access road onto Avebury Boulevard.

THE SOUTH-EAST VEHICULAR ACCESSWAY – SOUTH-EAST SIDE

PD52 j From the access road onto Avebury Boulevard to the porte cochere north-east of that point.

THE SOUTH-EAST VEHICULAR ACCESSWAY – SOUTH-EAST SIDE

PD52 k From the porte cochere north-east of the access road onto Avebury Boulevard to the access road opposite Lower Twelfth Street.

THE SOUTH-EAST VEHICULAR ACCESSWAY – SOUTH-EAST SIDE

PD52 l From a point opposite Lower Twelfth Street to the porte cochere leading to Garrick Walk.

THE SOUTH-EAST VEHICULAR ACCESSWAY – SOUTH-EAST SIDE

PD52 m From the porte cochere leading to Garrick Walk to the access road onto Avebury Boulevard.

THE SOUTH-EAST VEHICULAR ACCESSWAY – SOUTH-EAST SIDE

PD52 n From the access road onto Avebury Boulevard to Marlborough Gate.

SECKLOW GATE EAST

THE NORTH-EAST VEHICULAR ACCESSWAY – NORTH-EAST SIDE

PD53 a Between the access road from Secklow Gate (between Silbury Boulevard and Portway) and Silbury Boulevard.

THE NORTH-EAST VEHICULAR ACCESSWAY – SOUTH-WEST SIDE

PD53 b Between the access road from Secklow Gate (between Silbury Boulevard and Portway) and the build-out south-east of that point.

THE NORTH-EAST VEHICULAR ACCESSWAY – SOUTH-WEST SIDE

PD53 c Between the build-out south-east of the access road from Secklow Gate (between Silbury Boulevard and Portway) and Silbury Boulevard.

THE SOUTH-WEST VEHICULAR ACCESSWAY - NORTH-EAST SIDE
PD53 d Between the access road from Secklow Gate (between Silbury Boulevard and Portway) and Silbury Boulevard.

THE SOUTH-WEST VEHICULAR ACCESSWAY - SOUTH-WEST SIDE
PD53 e Between the access road from Secklow Gate (between Silbury Boulevard and Portway) and Silbury Boulevard.

SCHEDULE 2

PREMIUM RATE PAY AND DISPLAY PARKING PLACES

EXCEPT WITHIN THE MARKED BICYCLE/MOTOR CYCLE AND DISABLED PERSONS' PARKING PLACES.

BETWEEN 7.00 AM AND 6.00 PM ON EVERY DAY OF THE WEEK, FOR A MAXIMUM PERIOD OF 2 HOURS.

NORTH SIXTH STREET
NORTH-EAST SIDE

PD54 a From the junction with North Row to the access road to the Health Centre.

SOUTH-WEST SIDE

PD54 b From the junction with North Row in a south-easterly direction to the first kerbed quadrant pier on that side.

SCHEDULE 3

LONG STAY PAY AND DISPLAY PARKING PLACES

EXCEPT WITHIN THE MARKED BICYCLE/MOTOR CYCLE AND DISABLED PERSONS' PARKING PLACES.

BETWEEN 7.00 AM AND 6.00 PM ON EVERY DAY OF THE WEEK, FOR A MAXIMUM PERIOD OF 12 HOURS.

SILBURY BOULEVARD

THE NORTH-WEST VEHICULAR ACCESSWAY - NORTH-WEST SIDE

PL1 a From Elder Gate (that part which is public highway) to the porte cochere north-east of that point.

THE NORTH-WEST VEHICULAR ACCESSWAY - NORTH-WEST SIDE

PL1 b From the porte cochere north-east of Elder Gate (that part which is public highway) to the access road onto Silbury Boulevard.

THE NORTH-WEST VEHICULAR ACCESSWAY – NORTH-WEST SIDE

PL1 c From the access road onto Silbury Boulevard to the porte cochere north-east of that point.

THE NORTH-WEST VEHICULAR ACCESSWAY – NORTH-WEST SIDE

PL1 d From the porte cochere north-east of the access road onto Silbury Boulevard to Grafton Gate.

THE NORTH-WEST VEHICULAR ACCESSWAY – SOUTH-EAST SIDE

PL1 e From Elder Gate (that part which is public highway) to the porte cochere north-east of that point.

THE NORTH-WEST VEHICULAR ACCESSWAY – SOUTH-EAST SIDE

PL1 f From the porte cochere north-east of Elder Gate (that part which is public highway) to the access road onto Silbury Boulevard.

THE NORTH-WEST VEHICULAR ACCESSWAY – SOUTH-EAST SIDE

PL1 g From the access road onto Silbury Boulevard to the porte cochere north-east of that point.

THE NORTH-WEST VEHICULAR ACCESSWAY – SOUTH-EAST SIDE

PL1 h From the porte cochere north-east of the access road onto Silbury Boulevard to Grafton Gate.

SCHEDULE 4

PAY AND DISPLAY PARKING PLACES CHARGES

<u>COLUMN 1</u>	<u>COLUMN 2</u>
1. <u>CHARGE FOR PLACES</u> <u>SPECIFIED IN SCHEDULE 1</u>	<u>PERIOD</u>
£0.20	15 minutes and £0.20 for each successive period of 15 minutes up to the maximum permitted period for parking of 5 hours
2. <u>CHARGE FOR PLACES</u> <u>SPECIFIED IN SCHEDULE 2</u>	<u>PERIOD</u>
£0.20	15 minutes and £0.20 for each successive period of 15 minutes up to the maximum permitted period for parking of 2 hours
3. <u>CHARGE FOR PLACES</u> <u>SPECIFIED IN SCHEDULE 3</u>	<u>PERIOD</u>
£5.00	Up to the maximum permitted period for parking of 12 hours

SCHEDULE 5

REVOCATIONS

THE COUNCIL OF THE BOROUGH OF MILTON KEYNES (CENTRAL MILTON KEYNES) (ON-STREET PAY AND DISPLAY PARKING PLACES) ORDER 1999

SCHEDULE 1

PAY-AND-DISPLAY PARKING

PART A

PARKING BETWEEN 7.00AM AND 6.00PM ON EVERY DAY OF THE WEEK EXCEPT FOR A CHRISTMAS DAY, GOOD FRIDAY OR A BANK HOLIDAY

Items: PD2, PD8, PD14, PD16, PD21, PD26, PD30, PD31, PD32, PD33, PD36, PD37, PD38, PD39, PD40, PD42, PD43, PD44 and PD45 to PD74 inclusive

ARE HEREBY REVOKED.

SCHEDULE 1

PAY-AND-DISPLAY PARKING

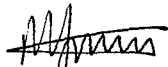
PART B

PARKING BETWEEN 7.00AM AND 6.00PM ON EVERY DAY OF THE WEEK EXCEPT FOR A CHRISTMAS DAY, GOOD FRIDAY OR A BANK HOLIDAY

Item: PD78

IS HEREBY REVOKED.

THE COMMON SEAL OF the **COUNCIL OF THE BOROUGH OF MILTON KEYNES** was hereunto affixed this 17TH day of October 2002 in the presence of:-


.....

HEAD OF LEGAL AND PROPERTY SERVICES

